

## Product datasheet for **TA811567AM**

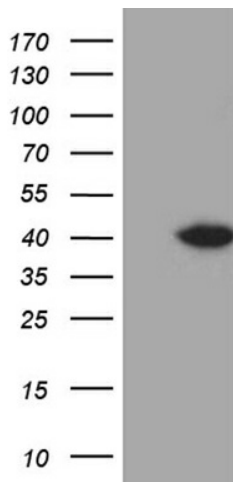
### DTWD1 Mouse Monoclonal Antibody (Biotin conjugated) [Clone ID: OTI2C2]

#### Product data:

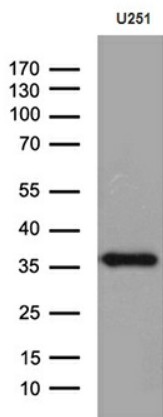
|                         |   |
|-------------------------|---|
| Product Type:           | Primary Antibodies  |
| Clone Name:             | OTI2C2  |
| Applications:           | WB  |
| Recommended Dilution:   | WB 1:500~2000   |
| Reactivity:             | Human   |
| Host:                   | Mouse   |
| Isotype:                | IgG2a   |
| Clonality:              | Monoclonal  |
| Immunogen:              | Full length human recombinant protein of human DTWD1 (NP_001138427) produced in E.coli.                   |
| Formulation:            | PBS (pH 7.3) containing 1% BSA, 50% glycerol and 0.02% sodium azide.                                      |
| Concentration:          | 0.5 mg/ml   |
| Purification:           | Purified from mouse ascites fluids or tissue culture supernatant by affinity chromatography (protein A/G) |
| Conjugation:            | Biotin  |
| Storage:                | Store at -20°C as received.   |
| Stability:              | Stable for 12 months from date of receipt.  |
| Predicted Protein Size: | 35.1 kDa  |
| Gene Name:              | DTW domain containing 1   |
| Database Link:          | <a href="#">NP_001138427</a><br><a href="#">Entrez Gene 56986 Human</a><br><a href="#">Q8N5C7</a>         |
| Synonyms:               | MDS009  |



[View online »](#)

**Product images:**


HEK293T cells were transfected with the pCMV6-ENTRY control (Left lane) or pCMV6-ENTRY DTWD1 ([RC227602], Right lane) cDNA for 48 hrs and lysed. Equivalent amounts of cell lysates (5 ug per lane) were separated by SDS-PAGE and immunoblotted with anti-DTWD1 (1:2000). Positive lysates [LY428603] (100ug) and [LC428603] (20ug) can be purchased separately from OriGene.



Western blot analysis of extracts (35ug) from cell lines and/or tissue lysates by using anti-DTWD1 monoclonal antibody (1:500).