

## Product datasheet for **TA811566AM**

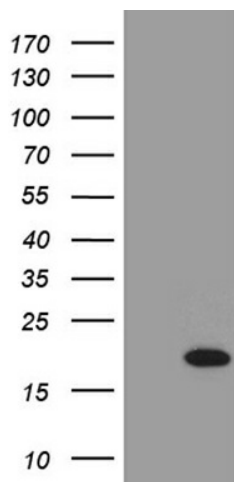
### PLAC8L1 Mouse Monoclonal Antibody (Biotin conjugated) [Clone ID: OTI8H8]

#### Product data:

Product Type:	Primary Antibodies
Clone Name:	OTI8H8
Applications:	WB
Recommended Dilution:	WB 1:500
Reactivity:	Human
Host:	Mouse
Isotype:	IgG2a
Clonality:	Monoclonal
Immunogen:	Full length human recombinant protein of human PLAC8L1 (NP_001025040) produced in E.coli.
Formulation:	PBS (pH 7.3) containing 1% BSA, 50% glycerol and 0.02% sodium azide.
Concentration:	0.5 mg/ml
Purification:	Purified from mouse ascites fluids or tissue culture supernatant by affinity chromatography (protein A/G)
Conjugation:	Biotin
Storage:	Store at -20°C as received.
Stability:	Stable for 12 months from date of receipt.
Predicted Protein Size:	19.7 kDa
Gene Name:	PLAC8-like 1
Database Link:	<a href="#">NP_001025040</a> <a href="#">Entrez Gene 153770 Human</a> <a href="#">A1L4L8</a>



[View online »](#)

**Product images:**

HEK293T cells were transfected with the pCMV6-ENTRY control (Cat# [PS100001], Left lane) or pCMV6-ENTRY PLAC8L1 (Cat# [RC216950], Right lane) cDNA for 48 hrs and lysed. Equivalent amounts of cell lysates (5 ug per lane) were separated by SDS-PAGE and immunoblotted with anti-PLAC8L1 (Cat# [TA811566])(1:500). Positive lysates [LY422253] (100ug) and [LC422253] (20ug) can be purchased separately from OriGene.