

## Product datasheet for **TA811560AM**

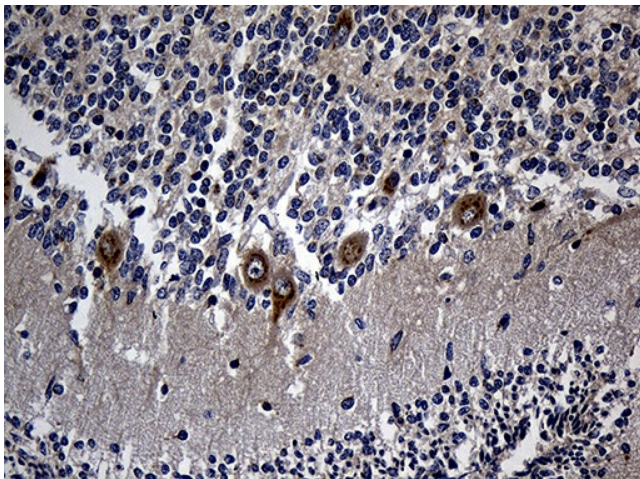
### Repulsive Guidance Molecule A (RGMA) Mouse Monoclonal Antibody (Biotin conjugated) [Clone ID: OTI4G8]

#### Product data:

Product Type:	Primary Antibodies
Clone Name:	OTI4G8
Applications:	IHC
Recommended Dilution:	IHC 1:250
Reactivity:	Human, Mouse, Rat
Host:	Mouse
Isotype:	IgG2a
Clonality:	Monoclonal
Immunogen:	Human recombinant protein fragment corresponding to amino acids 169-424 of human RGMA (NP_064596) produced in E.coli.
Formulation:	PBS (pH 7.3) containing 1% BSA, 50% glycerol and 0.02% sodium azide.
Concentration:	0.5 mg/ml
Purification:	Purified from mouse ascites fluids or tissue culture supernatant by affinity chromatography (protein A/G)
Conjugation:	Biotin
Storage:	Store at -20°C as received.
Stability:	Stable for 12 months from date of receipt.
Predicted Protein Size:	49.2 kDa
Gene Name:	repulsive guidance molecule family member a
Database Link:	<a href="#">NP_064596</a> <a href="#">Entrez Gene 244058 MouseEntrez Gene 308739 RatEntrez Gene 56963 Human Q96B86</a>
Synonyms:	RGM



[View online »](#)

**Product images:**

Immunohistochemical staining of paraffin-embedded Human embryonic cerebellum within the normal limits using anti-RGMA mouse monoclonal antibody. (Heat-induced epitope retrieval by 1mM EDTA in 10mM Tris buffer (pH8.5) at 120°C for 3min, [TA811560]) (1:250)