

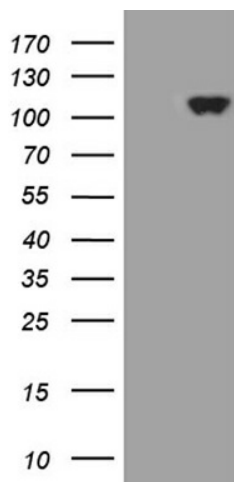
## Product datasheet for **TA811548M**

### **KEL Mouse Monoclonal Antibody [Clone ID: OTI8E1]**

#### **Product data:**

Product Type:	Primary Antibodies
Clone Name:	OTI8E1
Applications:	WB
Recommended Dilution:	WB 1:500
Reactivity:	Human
Host:	Mouse
Isotype:	IgG2a
Clonality:	Monoclonal
Immunogen:	Human recombinant protein fragment corresponding to amino acids 166-420 of human KEL (NP_000411) produced in E.coli.
Formulation:	PBS (pH 7.3) containing 1% BSA, 50% glycerol and 0.02% sodium azide.
Concentration:	1 mg/ml
Purification:	Purified from mouse ascites fluids or tissue culture supernatant by affinity chromatography (protein A/G)
Conjugation:	Unconjugated
Storage:	Store at -20°C as received.
Stability:	Stable for 12 months from date of receipt.
Predicted Protein Size:	82.6 kDa
Gene Name:	Kell blood group, metallo-endopeptidase
Database Link:	<a href="#">NP_000411</a> <a href="#">Entrez Gene 3792 Human</a> <a href="#">P23276</a>
Synonyms:	CD238; ECE3
Protein Families:	Druggable Genome, Protease, Transmembrane

[View online »](#)

**Product images:**


HEK293T cells were transfected with the pCMV6-ENTRY control (Cat# [PS100001], Left lane) or pCMV6-ENTRY KEL (Cat# [RC201127], Right lane) cDNA for 48 hrs and lysed. Equivalent amounts of cell lysates (5 ug per lane) were separated by SDS-PAGE and immunoblotted with anti-KEL (Cat# [TA811548])(1:500). Positive lysates [LY400148] (100ug) and [LC400148] (20ug) can be purchased separately from OriGene.