

## Product datasheet for **TA811543AM**

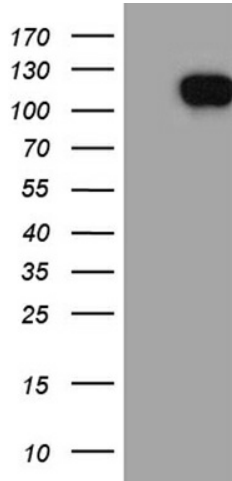
### Miz1 (ZBTB17) Mouse Monoclonal Antibody (Biotin conjugated) [Clone ID: OTI4F3]

#### Product data:

Product Type:	Primary Antibodies
Clone Name:	OTI4F3
Applications:	WB
Recommended Dilution:	WB 1:2000
Reactivity:	Human, Mouse, Rat
Host:	Mouse
Isotype:	IgG1
Clonality:	Monoclonal
Immunogen:	Human recombinant protein fragment corresponding to amino acids 112-457 of human ZBTB17 (NP_003434) produced in E.coli.
Formulation:	PBS (pH 7.3) containing 1% BSA, 50% glycerol and 0.02% sodium azide.
Concentration:	0.5 mg/ml
Purification:	Purified from mouse ascites fluids or tissue culture supernatant by affinity chromatography (protein A/G)
Conjugation:	Biotin
Storage:	Store at -20°C as received.
Stability:	Stable for 12 months from date of receipt.
Predicted Protein Size:	87.7 kDa
Gene Name:	zinc finger and BTB domain containing 17
Database Link:	<a href="#">NP_003434</a> <a href="#">Entrez Gene 7709 Human</a> <a href="#">Q13105</a>
Synonyms:	MIZ-1; pHZ-67; ZNF60; ZNF151
Protein Families:	Transcription Factors
Protein Pathways:	Cell cycle



[View online »](#)

**Product images:**

HEK293T cells were transfected with the pCMV6-ENTRY control (Cat# [PS100001], Left lane) or pCMV6-ENTRY ZBTB17 (Cat# [RC216143], Right lane) cDNA for 48 hrs and lysed. Equivalent amounts of cell lysates (5 ug per lane) were separated by SDS-PAGE and immunoblotted with anti-ZBTB17 (Cat# [TA811543])(1:2000). Positive lysates [LY401167] (100ug) and [LC401167] (20ug) can be purchased separately from OriGene.