

## Product datasheet for **TA811542S**

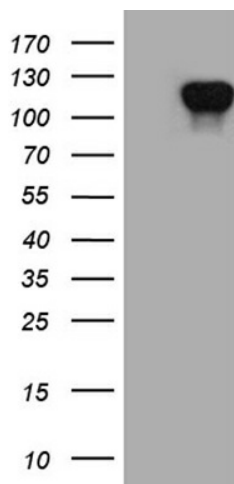
### Miz1 (ZBTB17) Mouse Monoclonal Antibody [Clone ID: OTI8A7]

#### Product data:

|                         |   |
|-------------------------|---|
| Product Type:           | Primary Antibodies  |
| Clone Name:             | OTI8A7  |
| Applications:           | WB  |
| Recommended Dilution:   | WB 1:2000   |
| Reactivity:             | Human, Mouse, Rat   |
| Host:                   | Mouse   |
| Isotype:                | IgG1  |
| Clonality:              | Monoclonal  |
| Immunogen:              | Human recombinant protein fragment corresponding to amino acids 112-457 of human ZBTB17 (NP_003434) produced in E.coli. |
| Formulation:            | PBS (pH 7.3) containing 1% BSA, 50% glycerol and 0.02% sodium azide.  |
| Concentration:          | 1 mg/ml   |
| Purification:           | Purified from mouse ascites fluids or tissue culture supernatant by affinity chromatography (protein A/G)               |
| Conjugation:            | Unconjugated  |
| Storage:                | Store at -20°C as received.   |
| Stability:              | Stable for 12 months from date of receipt.  |
| Predicted Protein Size: | 87.7 kDa  |
| Gene Name:              | zinc finger and BTB domain containing 17  |
| Database Link:          | <a href="#">NP_003434</a><br><a href="#">Entrez Gene 7709 Human</a><br><a href="#">Q13105</a>                           |
| Synonyms:               | MIZ-1; pHZ-67; ZNF60; ZNF151  |
| Protein Families:       | Transcription Factors   |
| Protein Pathways:       | Cell cycle  |



[View online »](#)

**Product images:**

HEK293T cells were transfected with the pCMV6-ENTRY control (Left lane) or pCMV6-ENTRY ZBTB17 ([RC216143], Right lane) cDNA for 48 hrs and lysed. Equivalent amounts of cell lysates (5 ug per lane) were separated by SDS-PAGE and immunoblotted with anti-ZBTB17 (1:2000). Positive lysates [LY401167] (100ug) and [LC401167] (20ug) can be purchased separately from OriGene.