

## Product datasheet for **TA811539M**

### CD14 Mouse Monoclonal Antibody [Clone ID: OTI6D7]

#### Product data:

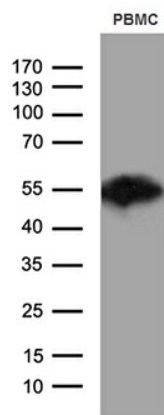
|                         |  |
|-------------------------|--|
| Product Type:           | Primary Antibodies   |
| Clone Name:             | OTI6D7   |
| Applications:           | FC, IHC, WB  |
| Recommended Dilution:   | WB 1:500, FLOW 1:100   |
| Reactivity:             | Human  |
| Host:                   | Mouse  |
| Isotype:                | IgG1   |
| Clonality:              | Monoclonal   |
| Immunogen:              | Human recombinant protein fragment corresponding to amino acids 20-87 of human CD14 (NP_000582) produced in E.coli.  |
| Formulation:            | PBS (pH 7.3) containing 1% BSA, 50% glycerol and 0.02% sodium azide.   |
| Concentration:          | 1 mg/ml  |
| Purification:           | Purified from mouse ascites fluids or tissue culture supernatant by affinity chromatography (protein A/G)  |
| Conjugation:            | Unconjugated   |
| Storage:                | Store at -20°C as received.  |
| Stability:              | Stable for 12 months from date of receipt.   |
| Predicted Protein Size: | 40.08 kDa  |
| Gene Name:              | CD14 molecule  |
| Database Link:          | <a href="#">NP_000582</a><br><a href="#">Entrez Gene 929 Human</a><br><a href="#">P08571</a>   |
| Background:             | The protein encoded by this gene is a surface antigen that is preferentially expressed on monocytes/macrophages. It cooperates with other proteins to mediate the innate immune response to bacterial lipopolysaccharide. Alternative splicing results in multiple transcript variants encoding the same protein. [provided by RefSeq, Mar 2010] |
| Synonyms:               | CD14 antigen; CD14 molecule; monocyte differentiation antigen CD14   |


[View online »](#)

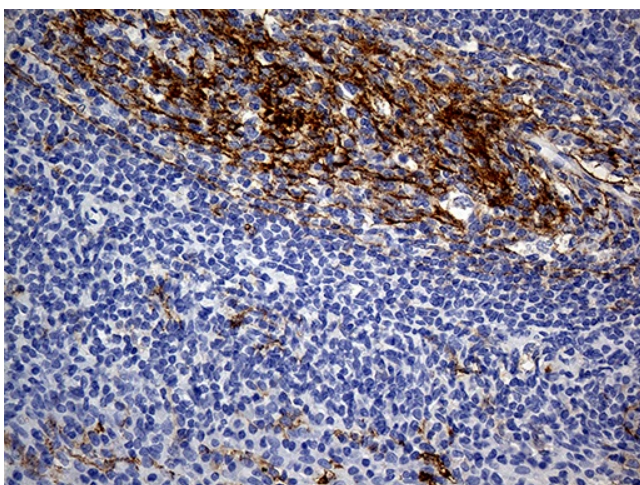
**Protein Families:** Adult stem cells, Druggable Genome, Embryonic stem cells, ES Cell Differentiation/IPS, Transmembrane

**Protein Pathways:** Hematopoietic cell lineage, MAPK signaling pathway, Pathogenic Escherichia coli infection, Regulation of actin cytoskeleton, Toll-like receptor signaling pathway

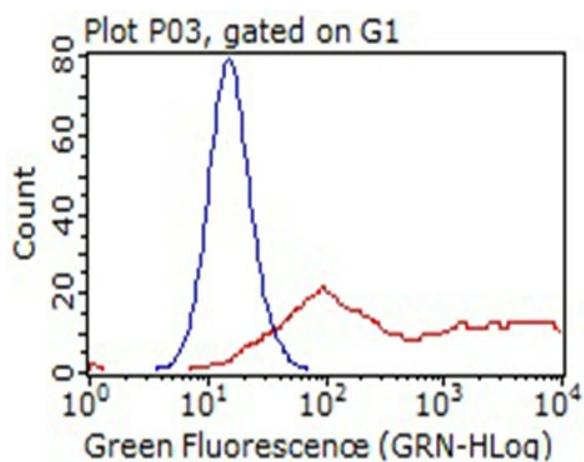
### Product images:



Western blot analysis of extracts (35ug) from PBMC by using anti-CD14 monoclonal antibody (1:500).



Immunohistochemical staining of paraffin-embedded Human tonsil within the normal limits using anti-CD14 mouse monoclonal antibody. Heat-induced epitope retrieval by EDTA solution buffer pH 8.0 at 120°C for 3 min.



HEK293T cells transfected with either [RC203819] overexpress plasmid (Red) or empty vector control plasmid (Blue) were immunostained by anti-CD14 antibody ([TA811539]), and then analyzed by flow cytometry (1:100).