

## Product datasheet for **TA811529**

### CD14 Mouse Monoclonal Antibody [Clone ID: OTI3D6]

#### Product data:

Product Type:	Primary Antibodies
Clone Name:	OTI3D6
Applications:	FC, WB
Recommended Dilution:	WB 1:500, FLOW 1:100
Reactivity:	Human
Host:	Mouse
Isotype:	IgG2b
Clonality:	Monoclonal
Immunogen:	Human recombinant protein fragment corresponding to amino acids 20-367 of human CD14 (NP_000582) produced in E.coli.
Formulation:	PBS (pH 7.3) containing 1% BSA, 50% glycerol and 0.02% sodium azide.
Concentration:	1 mg/ml
Purification:	Purified from mouse ascites fluids or tissue culture supernatant by affinity chromatography (protein A/G)
Conjugation:	Unconjugated
Storage:	Store at -20°C as received.
Stability:	Stable for 12 months from date of receipt.
Predicted Protein Size:	40.08 kDa
Gene Name:	CD14 molecule
Database Link:	<a href="#">NP_000582</a> <a href="#">Entrez Gene 929 Human</a> <a href="#">P08571</a>
Background:	The protein encoded by this gene is a surface antigen that is preferentially expressed on monocytes/macrophages. It cooperates with other proteins to mediate the innate immune response to bacterial lipopolysaccharide. Alternative splicing results in multiple transcript variants encoding the same protein. [provided by RefSeq, Mar 2010]
Synonyms:	CD14 antigen; CD14 molecule; monocyte differentiation antigen CD14

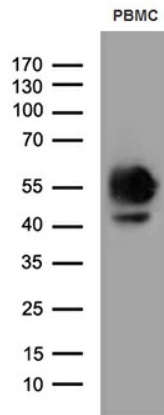


[View online »](#)

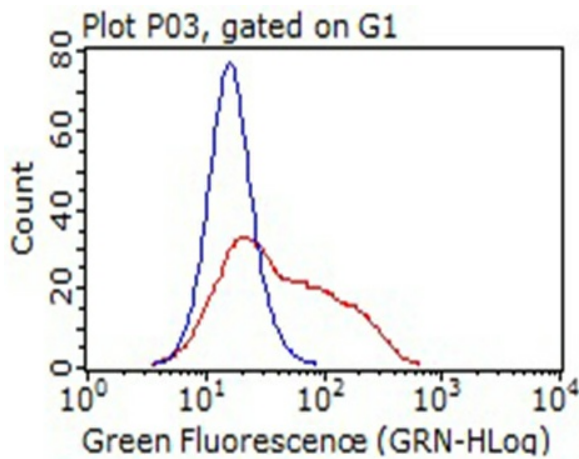
**Protein Families:** Adult stem cells, Druggable Genome, Embryonic stem cells, ES Cell Differentiation/IPS, Transmembrane

**Protein Pathways:** Hematopoietic cell lineage, MAPK signaling pathway, Pathogenic Escherichia coli infection, Regulation of actin cytoskeleton, Toll-like receptor signaling pathway

**Product images:**



Western blot analysis of extracts (35ug) from PBMC by using anti-CD14 monoclonal antibody (1:500).



HEK293T cells transfected with either [RC203819] overexpress plasmid (Red) or empty vector control plasmid (Blue) were immunostained by anti-CD14 antibody (TA811529), and then analyzed by flow cytometry (1:100).