

## Product datasheet for **TA811516**

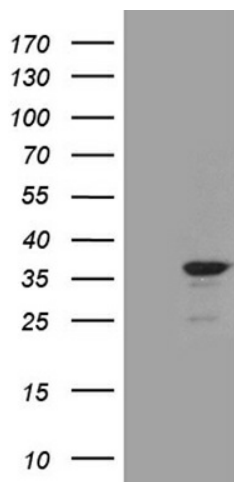
### **TEDC1 Mouse Monoclonal Antibody [Clone ID: OT11H5]**

#### **Product data:**

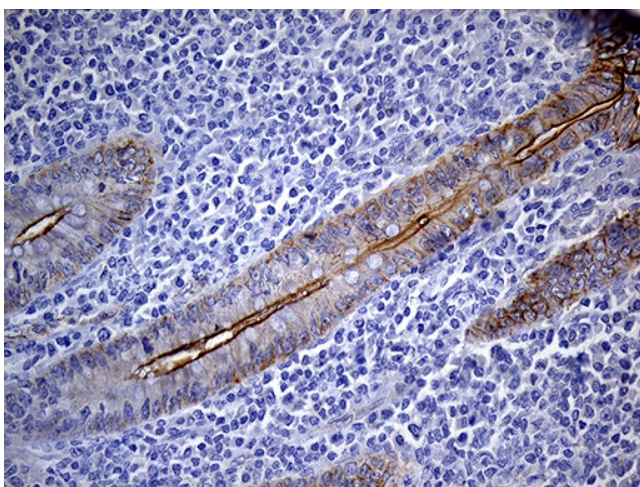
Product Type:	Primary Antibodies
Clone Name:	OT11H5
Applications:	IHC, WB
Recommended Dilution:	WB 1:2000, IHC 1:150
Reactivity:	Human
Host:	Mouse
Isotype:	IgG1
Clonality:	Monoclonal
Immunogen:	Full length human recombinant protein of human C14ORF80 (NP_775879) produced in E.coli.
Formulation:	PBS (pH 7.3) containing 1% BSA, 50% glycerol and 0.02% sodium azide.
Concentration:	1 mg/ml
Purification:	Purified from mouse ascites fluids or tissue culture supernatant by affinity chromatography (protein A/G)
Conjugation:	Unconjugated
Storage:	Store at -20°C as received.
Stability:	Stable for 12 months from date of receipt.
Gene Name:	chromosome 14 open reading frame 80
Database Link:	<a href="#">NP_775879</a> <a href="#">Entrez Gene 283643 Human</a> <a href="#">Q86SX3</a>
Synonyms:	chromosome 14 open reading frame 80; MGC16771



[View online »](#)

**Product images:**

HEK293T cells were transfected with the pCMV6-ENTRY control (Left lane) or pCMV6-ENTRY C14orf80 ([RC203670], Right lane) cDNA for 48 hrs and lysed. Equivalent amounts of cell lysates (5 ug per lane) were separated by SDS-PAGE and immunoblotted with anti-C14orf80 (1:2000).



Immunohistochemical staining of paraffin-embedded Human appendix tissue within the normal limits using anti-C14orf80 mouse monoclonal antibody. (Heat-induced epitope retrieval by 1mM EDTA in 10mM Tris buffer (pH8.5) at 120°C for 3min, TA811516) (1:150)