

## Product datasheet for **TA811511**

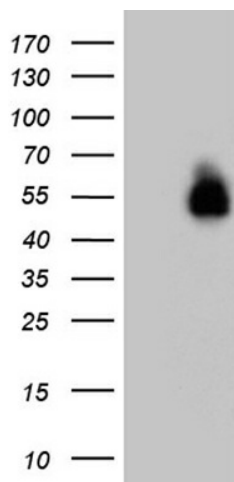
### **BTBD15 (ZBTB44) Mouse Monoclonal Antibody [Clone ID: OTI7F12]**

#### **Product data:**

<b>Product Type:</b>	Primary Antibodies
<b>Clone Name:</b>	OTI7F12
<b>Applications:</b>	WB
<b>Recommended Dilution:</b>	WB 1:2000
<b>Reactivity:</b>	Human, Mouse, Rat
<b>Host:</b>	Mouse
<b>Isotype:</b>	IgG1
<b>Clonality:</b>	Monoclonal
<b>Immunogen:</b>	Human recombinant protein fragment corresponding to amino acids 131-378 of human ZBTB44 (NP_054874) produced in E.coli.
<b>Formulation:</b>	PBS (pH 7.3) containing 1% BSA, 50% glycerol and 0.02% sodium azide.
<b>Concentration:</b>	1 mg/ml
<b>Purification:</b>	Purified from mouse ascites fluids or tissue culture supernatant by affinity chromatography (protein A/G)
<b>Conjugation:</b>	Unconjugated
<b>Storage:</b>	Store at -20°C as received.
<b>Stability:</b>	Stable for 12 months from date of receipt.
<b>Gene Name:</b>	zinc finger and BTB domain containing 44
<b>Database Link:</b>	<a href="#">NP_054874</a> <a href="#">Entrez Gene 235132</a> <a href="#">MouseEntrez Gene 363035</a> <a href="#">RatEntrez Gene 29068</a> <a href="#">Human Q8NCP5</a>
<b>Synonyms:</b>	BTBD15; HSPC063; ZNF851



[View online »](#)

**Product images:**

HEK293T cells were transfected with the pCMV6-ENTRY control (Cat# [PS100001], Left lane) or pCMV6-ENTRY ZBTB44 (Cat# [RC209962], Right lane) cDNA for 48 hrs and lysed. Equivalent amounts of cell lysates (5 ug per lane) were separated by SDS-PAGE and immunoblotted with anti-ZBTB44 (Cat# TA811511)(1:2000). Positive lysates [LY402282] (100ug) and [LC402282] (20ug) can be purchased separately from OriGene.