

Product datasheet for **TA811509**

WIPI1 Mouse Monoclonal Antibody [Clone ID: OTI10F4]

Product data:

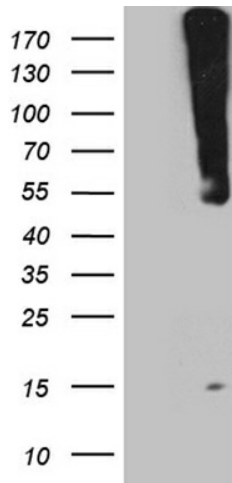
Product Type:	Primary Antibodies
Clone Name:	OTI10F4
Applications:	WB
Recommended Dilution:	WB 1:500~2000
Reactivity:	Human, Mouse, Rat
Host:	Mouse
Isotype:	IgG1
Clonality:	Monoclonal
Immunogen:	Human recombinant protein fragment corresponding to amino acids 195-446 of human WIPI1 (NP_060453) produced in E.coli.
Formulation:	PBS (pH 7.3) containing 1% BSA, 50% glycerol and 0.02% sodium azide.
Concentration:	1 mg/ml
Purification:	Purified from mouse ascites fluids or tissue culture supernatant by affinity chromatography (protein A/G)
Conjugation:	Unconjugated
Storage:	Store at -20°C as received.
Stability:	Stable for 12 months from date of receipt.
Predicted Protein Size:	48.5 kDa
Gene Name:	WD repeat domain, phosphoinositide interacting 1
Database Link:	NP_060453 Entrez Gene 52639 Mouse Entrez Gene 303630 Rat Entrez Gene 55062 Human Q5MNZ9
Background:	This gene encodes a WD40 repeat protein. Members of the WD40 repeat family are key components of many essential biologic functions. They regulate the assembly of multiprotein complexes by presenting a beta-propeller platform for simultaneous and reversible protein-protein interactions. Members of the WIPI subfamily of WD40 repeat proteins have a 7-bladed propeller structure and contain a conserved motif for interaction with phospholipids. Alternative splicing results in multiple transcript variants. [provided by RefSeq, Mar 2016]



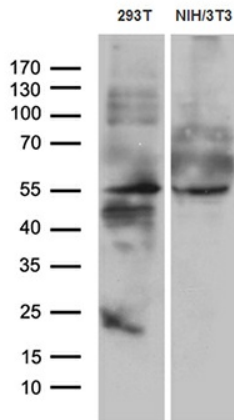
[View online »](#)

Synonyms: ATG18; ATG18A; WIPI49

Product images:



HEK293T cells were transfected with the pCMV6-ENTRY control (Left lane) or pCMV6-ENTRY WIPI1 ([RC208094], Right lane) cDNA for 48 hrs and lysed. Equivalent amounts of cell lysates (5 ug per lane) were separated by SDS-PAGE and immunoblotted with anti-WIPI1 (1:2000). Positive lysates [LY402635] (100ug) and [LC402635] (20ug) can be purchased separately from OriGene.



Western blot analysis of extracts (35ug) from 2 different cell lines by using anti-WIPI1 monoclonal antibody (1:500).