

## Product datasheet for **TA811508AM**

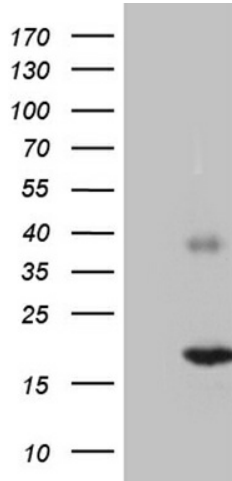
### IRF1-AS1 Mouse Monoclonal Antibody (Biotin conjugated) [Clone ID: OTI4B11]

#### Product data:

Product Type:	Primary Antibodies
Clone Name:	OTI4B11
Applications:	WB
Recommended Dilution:	WB 1:2000
Reactivity:	Human
Host:	Mouse
Isotype:	IgG2b
Clonality:	Monoclonal
Immunogen:	Full length human recombinant protein of human C5orf56 (NP_001013739) produced in E.coli.
Formulation:	PBS (pH 7.3) containing 1% BSA, 50% glycerol and 0.02% sodium azide.
Concentration:	0.5 mg/ml
Purification:	Purified from mouse ascites fluids or tissue culture supernatant by affinity chromatography (protein A/G)
Conjugation:	Biotin
Storage:	Store at -20°C as received.
Stability:	Stable for 12 months from date of receipt.
Predicted Protein Size:	14.5 kDa
Gene Name:	chromosome 5 open reading frame 56
Database Link:	<a href="#">NP_001013739</a> <a href="#">Entrez Gene 441108 Human</a> <a href="#">Q8N8D9</a>
Synonyms:	FLJ21568; FLJ26121



[View online »](#)

**Product images:**

HEK293T cells were transfected with the pCMV6-ENTRY control (Cat# [PS100001], Left lane) or pCMV6-ENTRY C5orf56 (Cat# [RC217493], Right lane) cDNA for 48 hrs and lysed. Equivalent amounts of cell lysates (5 ug per lane) were separated by SDS-PAGE and immunoblotted with anti-C5orf56 antibody (Cat# [TA811508]). Positive lysates [LY423025] (100ug) and [LC423025] (20ug) can be purchased separately from OriGene.