

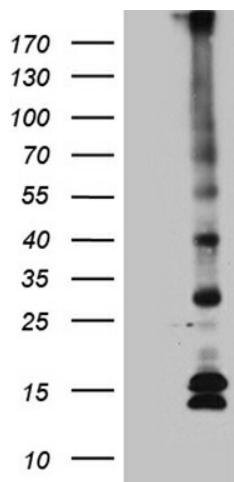
## Product datasheet for **TA811507M**

### IRF1-AS1 Mouse Monoclonal Antibody [Clone ID: OTI2H3]

#### Product data:

Product Type:	Primary Antibodies
Clone Name:	OTI2H3
Applications:	WB
Recommended Dilution:	WB 1:2000
Reactivity:	Human
Host:	Mouse
Isotype:	IgG1
Clonality:	Monoclonal
Immunogen:	Full length human recombinant protein of human C5orf56 (NP_001013739) produced in E.coli.
Formulation:	PBS (pH 7.3) containing 1% BSA, 50% glycerol and 0.02% sodium azide.
Concentration:	1 mg/ml
Purification:	Purified from mouse ascites fluids or tissue culture supernatant by affinity chromatography (protein A/G)
Conjugation:	Unconjugated
Storage:	Store at -20°C as received.
Stability:	Stable for 12 months from date of receipt.
Gene Name:	chromosome 5 open reading frame 56
Database Link:	<a href="#">NP_001013739</a> <a href="#">Entrez Gene 441108 Human</a> <a href="#">Q8N8D9</a>
Synonyms:	FLJ21568; FLJ26121

[View online »](#)

**Product images:**


HEK293T cells were transfected with the pCMV6-ENTRY control (Left lane) or pCMV6-ENTRY C5orf56 ([RC217493], Right lane) cDNA for 48 hrs and lysed. Equivalent amounts of cell lysates (5 ug per lane) were separated by SDS-PAGE and immunoblotted with anti-C5orf56 (1:2000). Positive lysates [LY423025] (100ug) and [LC423025] (20ug) can be purchased separately from OriGene.