

## Product datasheet for **TA811498AM**

### **SAPAP3 (DLGAP3) Mouse Monoclonal Antibody (Biotin conjugated) [Clone ID: OTI1D3]**

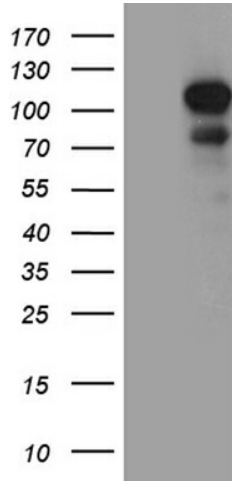
#### **Product data:**

Product Type:	Primary Antibodies
Clone Name:	OTI1D3
Applications:	WB
Recommended Dilution:	WB 1:500
Reactivity:	Human, Mouse, Rat
Host:	Mouse
Isotype:	IgG1
Clonality:	Monoclonal
Immunogen:	Human recombinant protein fragment corresponding to amino acids 794-902 of human DLGAP3 (NP_001073887) produced in E.coli.
Formulation:	PBS (pH 7.3) containing 1% BSA, 50% glycerol and 0.02% sodium azide.
Concentration:	0.5 mg/ml
Purification:	Purified from mouse ascites fluids or tissue culture supernatant by affinity chromatography (protein A/G)
Conjugation:	Biotin
Storage:	Store at -20°C as received.
Stability:	Stable for 12 months from date of receipt.
Predicted Protein Size:	105.9 kDa
Gene Name:	DLG associated protein 3
Database Link:	<a href="#">NP_001073887</a> <a href="#">Entrez Gene 242667 Mouse</a> <a href="#">Entrez Gene 286923 Rat</a> <a href="#">Entrez Gene 58512 Human</a> <a href="#">O95886</a>
Synonyms:	DAP3; SAPAP3



[View online »](#)

## Product images:



HEK293T cells were transfected with the pCMV6-ENTRY control (Left lane) or pCMV6-ENTRY DLGAP3 ([RC213863], Right lane) cDNA for 48 hrs and lysed. Equivalent amounts of cell lysates (5 ug per lane) were separated by SDS-PAGE and immunoblotted with anti-DLGAP3 (1:500). Positive lysates [LY421635] (100ug) and [LC421635] (20ug) can be purchased separately from OriGene.