

Product datasheet for **TA811497**

Cytochrome P450 26B (CYP26B1) Mouse Monoclonal Antibody [Clone ID: OTI4A8]

Product data:

Product Type:	Primary Antibodies
Clone Name:	OTI4A8
Applications:	WB
Recommended Dilution:	WB 1:2000
Reactivity:	Human, Mouse, Rat
Host:	Mouse
Isotype:	IgG1
Clonality:	Monoclonal
Immunogen:	Human recombinant protein fragment corresponding to amino acids 229-512 of human CYP26B1 (NP_063938) produced in E.coli.
Formulation:	PBS (pH 7.3) containing 1% BSA, 50% glycerol and 0.02% sodium azide.
Concentration:	1 mg/ml
Purification:	Purified from mouse ascites fluids or tissue culture supernatant by affinity chromatography (protein A/G)
Conjugation:	Unconjugated
Storage:	Store at -20°C as received.
Stability:	Stable for 12 months from date of receipt.
Gene Name:	cytochrome P450 family 26 subfamily B member 1
Database Link:	NP_063938 Entrez Gene 232174 MouseEntrez Gene 312495 RatEntrez Gene 56603 Human Q9NR63



[View online »](#)

Background:

This gene encodes a member of the cytochrome P450 superfamily. The cytochrome P450 proteins are monooxygenases which catalyze many reactions involved in drug metabolism and synthesis of cholesterol, steroids and other lipids. The encoded protein is localized to the endoplasmic reticulum, and functions as a critical regulator of all-trans retinoic acid levels by the specific inactivation of all-trans retinoic acid to hydroxylated forms. Mutations in this gene are associated with radiohumeral fusions and other skeletal and craniofacial anomalies, and increased levels of the encoded protein are associated with atherosclerotic lesions. Alternative splicing results in multiple transcript variants. [provided by RefSeq, Apr 2013]

Synonyms:

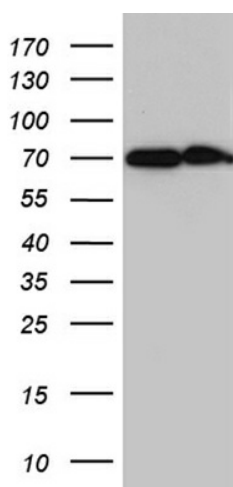
CYP26A2; P450RAI-2; P450RAI2; RHFCA

Protein Families:

Druggable Genome, P450

Protein Pathways:

Retinol metabolism

Product images:

HEK293T cells were transfected with the pCMV6-ENTRY control (Left lane) or pCMV6-ENTRY CYP26B1 ([SC120799], Right lane) cDNA for 48 hrs and lysed. Equivalent amounts of cell lysates (5 ug per lane) were separated by SDS-PAGE and immunoblotted with anti-CYP26B1 (1:2000). Positive lysates [LY402746] (100ug) and [LC402746] (20ug) can be purchased separately from OriGene.