

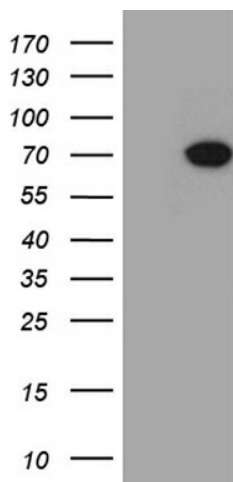
## Product datasheet for **TA811495M**

### IMP3 (IGF2BP3) Mouse Monoclonal Antibody [Clone ID: OTI5G10]

#### Product data:

Product Type:	Primary Antibodies
Clone Name:	OTI5G10
Applications:	WB
Recommended Dilution:	WB 1:2000
Reactivity:	Human, Mouse, Rat
Host:	Mouse
Isotype:	IgG1
Clonality:	Monoclonal
Immunogen:	Full length human recombinant protein of human IGF2BP3 (NP_006538) produced in E.coli.
Formulation:	PBS (pH 7.3) containing 1% BSA, 50% glycerol and 0.02% sodium azide.
Concentration:	1 mg/ml
Purification:	Purified from mouse ascites fluids or tissue culture supernatant by affinity chromatography (protein A/G)
Conjugation:	Unconjugated
Storage:	Store at -20°C as received.
Stability:	Stable for 12 months from date of receipt.
Predicted Protein Size:	63.5 kDa
Gene Name:	insulin like growth factor 2 mRNA binding protein 3
Database Link:	<a href="#">NP_006538</a> <a href="#">Entrez Gene 140488 Mouse</a> <a href="#">Entrez Gene 312320 Rat</a> <a href="#">Entrez Gene 10643 Human</a> <a href="#">O00425</a>
Synonyms:	CT98; IMP-3; IMP3; KOC; KOC1; VICKZ3


[View online »](#)

**Product images:**


HEK293T cells were transfected with the pCMV6-ENTRY control (Left lane) or pCMV6-ENTRY IGF2BP3 ([RC209597], Right lane) cDNA for 48 hrs and lysed. Equivalent amounts of cell lysates (5 ug per lane) were separated by SDS-PAGE and immunoblotted with anti-IGF2BP3 (1:2000). Positive lysates [LY416563] (100ug) and [LC416563] (20ug) can be purchased separately from OriGene.