

Product datasheet for **TA811489M**

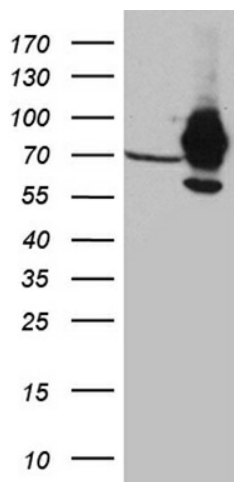
IMP3 (IGF2BP3) Mouse Monoclonal Antibody [Clone ID: OTI7B10]

Product data:

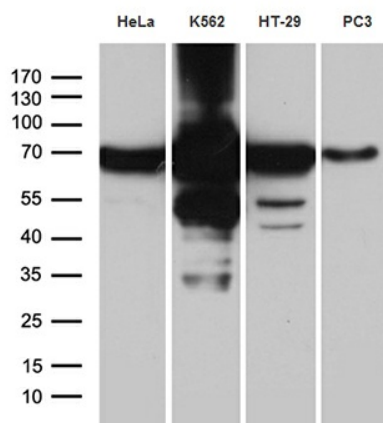
Product Type:	Primary Antibodies
Clone Name:	OTI7B10
Applications:	IHC, WB
Recommended Dilution:	WB 1:500~2000, IHC 1:500
Reactivity:	Human, Mouse, Rat
Host:	Mouse
Isotype:	IgG2a
Clonality:	Monoclonal
Immunogen:	Full length human recombinant protein of human IGF2BP3 (NP_006538) produced in E.coli.
Formulation:	PBS (pH 7.3) containing 1% BSA, 50% glycerol and 0.02% sodium azide.
Concentration:	1 mg/ml
Purification:	Purified from mouse ascites fluids or tissue culture supernatant by affinity chromatography (protein A/G)
Conjugation:	Unconjugated
Storage:	Store at -20°C as received.
Stability:	Stable for 12 months from date of receipt.
Gene Name:	insulin like growth factor 2 mRNA binding protein 3
Database Link:	NP_006538 Entrez Gene 140488 MouseEntrez Gene 312320 RatEntrez Gene 10643 Human O00425
Background:	The protein encoded by this gene is primarily found in the nucleolus, where it can bind to the 5' UTR of the insulin-like growth factor II leader 3 mRNA and may repress translation of insulin-like growth factor II during late development. The encoded protein contains several KH domains, which are important in RNA binding and are known to be involved in RNA synthesis and metabolism. A pseudogene exists on chromosome 7, and there are putative pseudogenes on other chromosomes. [provided by RefSeq, Jul 2008]
Synonyms:	CT98; IMP-3; IMP3; KOC; KOC1; VICKZ3


[View online »](#)

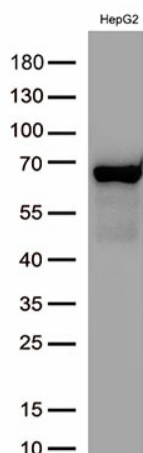
Product images:



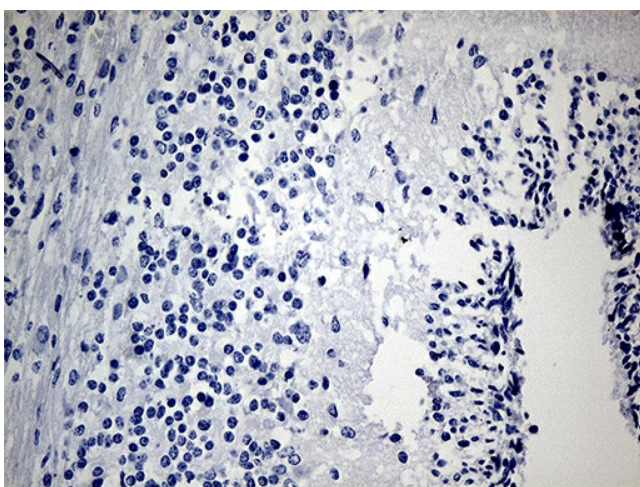
HEK293T cells were transfected with the pCMV6-ENTRY control (Left lane) or pCMV6-ENTRY IGF2BP3 ([RC209597], Right lane) cDNA for 48 hrs and lysed. Equivalent amounts of cell lysates (5 ug per lane) were separated by SDS-PAGE and immunoblotted with anti-IGF2BP3 (1:2000). Positive lysates [LY416563] (100ug) and [LC416563] (20ug) can be purchased separately from OriGene.



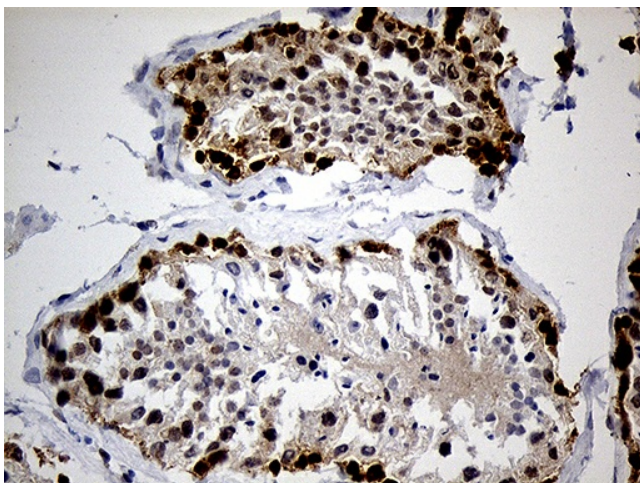
Western blot analysis of extracts (35ug) from 4 different cell lines by using anti-IGF2BP3 monoclonal antibody (1:500).



Western blot analysis of extracts (30ug) from HepG2 lysate by using anti-IGF2BP3 monoclonal antibody([TA811489], 1:500)



Immunohistochemical staining of paraffin-embedded Human embryonic cerebellum within the normal limits using anti-IGF2BP3 mouse monoclonal antibody. This figure shows negative staining. Heat-induced epitope retrieval by EDTA solution buffer pH 8.0 at 120°C for 3 min.



Immunohistochemical staining of paraffin-embedded Human testicle tissue within the normal limits using anti-IGF2BP3 mouse monoclonal antibody. Heat-induced epitope retrieval by EDTA solution buffer pH 8.0 at 120°C for 3 min.