

Product datasheet for **TA811487M**

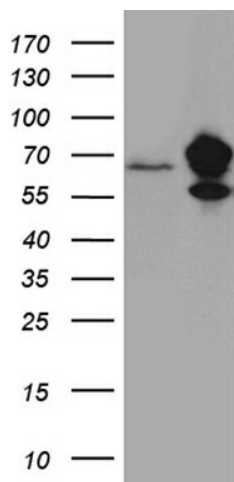
IMP3 (IGF2BP3) Mouse Monoclonal Antibody [Clone ID: OTI4H5]

Product data:

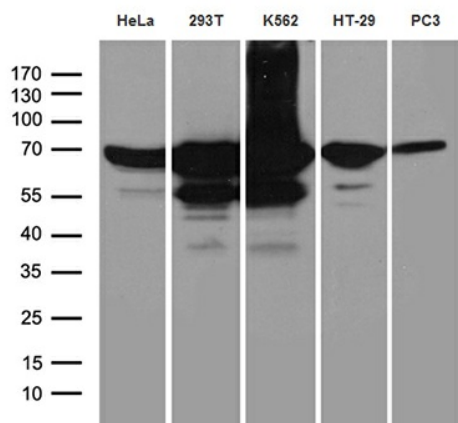
Product Type:	Primary Antibodies
Clone Name:	OTI4H5
Applications:	IHC, WB
Recommended Dilution:	WB 1:500~2000, IHC 1:250
Reactivity:	Human, Mouse, Rat
Host:	Mouse
Isotype:	IgG1
Clonality:	Monoclonal
Immunogen:	Full length human recombinant protein of human IGF2BP3 (NP_006538) produced in E.coli.
Formulation:	PBS (pH 7.3) containing 1% BSA, 50% glycerol and 0.02% sodium azide.
Concentration:	1 mg/ml
Purification:	Purified from mouse ascites fluids or tissue culture supernatant by affinity chromatography (protein A/G)
Conjugation:	Unconjugated
Storage:	Store at -20°C as received.
Stability:	Stable for 12 months from date of receipt.
Predicted Protein Size:	63.5 kDa
Gene Name:	insulin like growth factor 2 mRNA binding protein 3
Database Link:	NP_006538 Entrez Gene 140488 Mouse Entrez Gene 312320 Rat Entrez Gene 10643 Human O00425
Synonyms:	CT98; IMP-3; IMP3; KOC; KOC1; VICKZ3


[View online »](#)

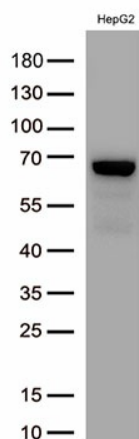
Product images:



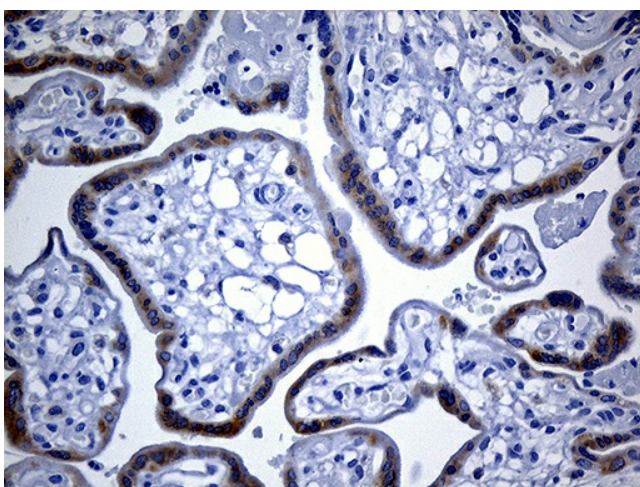
HEK293T cells were transfected with the pCMV6-ENTRY control (Cat# [PS100001], Left lane) or pCMV6-ENTRY IGF2BP3 (Cat# [RC209597], Right lane) cDNA for 48 hrs and lysed. Equivalent amounts of cell lysates (5 ug per lane) were separated by SDS-PAGE and immunoblotted with anti-IGF2BP3 (Cat# [TA811487])(1:2000). Positive lysates [LY416563] (100ug) and [LC416563] (20ug) can be purchased separately from OriGene.



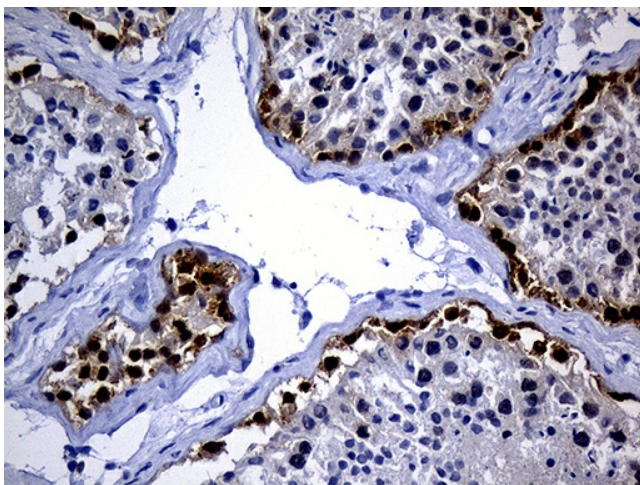
Western blot analysis of extracts (35ug) from 5 different cell lines by using anti-IGF2BP3 monoclonal antibody (1:500).



Western blot analysis of extracts (30ug) from HepG2 lysate by using anti-IMP3 monoclonal antibody (TA811487, 1:500)



Immunohistochemical staining of paraffin-embedded Human placenta tissue within the normal limits using anti-IGF2BP3 mouse monoclonal antibody. Heat-induced epitope retrieval by EDTA solution buffer pH 8.0 at 120°C for 3 min.



Immunohistochemical staining of paraffin-embedded Human testicle tissue within the normal limits using anti-IGF2BP3 mouse monoclonal antibody. Heat-induced epitope retrieval by EDTA solution buffer pH 8.0 at 120°C for 3 min.