

Product datasheet for **TA811476**

Staufen (STAU1) Mouse Monoclonal Antibody [Clone ID: OTI5F6]

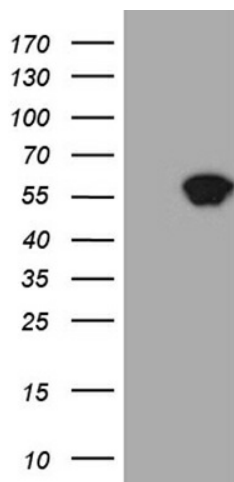
Product data:

Product Type:	Primary Antibodies
Clone Name:	OTI5F6
Applications:	WB
Recommended Dilution:	WB 1:500~2000
Reactivity:	Human, Mouse, Rat
Host:	Mouse
Isotype:	IgG1
Clonality:	Monoclonal
Immunogen:	Full length human recombinant protein of human STAU1 (NP_059346) produced in E.coli.
Formulation:	PBS (pH 7.3) containing 1% BSA, 50% glycerol and 0.02% sodium azide.
Concentration:	1 mg/ml
Purification:	Purified from mouse ascites fluids or tissue culture supernatant by affinity chromatography (protein A/G)
Conjugation:	Unconjugated
Storage:	Store at -20°C as received.
Stability:	Stable for 12 months from date of receipt.
Predicted Protein Size:	54.8 kDa
Gene Name:	staufen double-stranded RNA binding protein 1
Database Link:	NP_059346 Entrez Gene 20853 Mouse Entrez Gene 84496 Rat Entrez Gene 6780 Human O95793
Synonyms:	PPP1R150; STAU

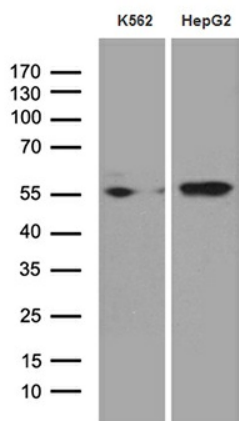


[View online »](#)

Product images:



HEK293T cells were transfected with the pCMV6-ENTRY control (Left lane) or pCMV6-ENTRY STAU1 ([RC218095], Right lane) cDNA for 48 hrs and lysed. Equivalent amounts of cell lysates (5 ug per lane) were separated by SDS-PAGE and immunoblotted with anti-STAU1 (1:2000). Positive lysates [LY429536] (100ug) and [LC429536] (20ug) can be purchased separately from OriGene.



Western blot analysis of extracts (35ug) from 2 different cell lines by using anti-STAU1 monoclonal antibody (1:500).