

## Product datasheet for **TA811472M**

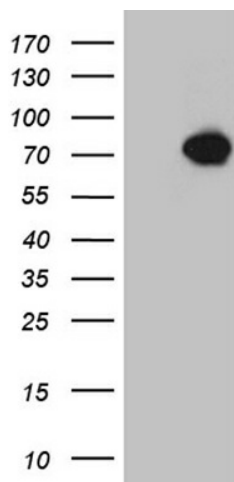
### **KLC2 Mouse Monoclonal Antibody [Clone ID: OTI2E7]**

#### **Product data:**

Product Type:	Primary Antibodies
Clone Name:	OTI2E7
Applications:	WB
Recommended Dilution:	WB 1:2000
Reactivity:	Human, Mouse, Rat
Host:	Mouse
Isotype:	IgG1
Clonality:	Monoclonal
Immunogen:	Human recombinant protein fragment corresponding to amino acids 335-622 of human KLC2 (NP_073733) produced in E.coli.
Formulation:	PBS (pH 7.3) containing 1% BSA, 50% glycerol and 0.02% sodium azide.
Concentration:	1 mg/ml
Purification:	Purified from mouse ascites fluids or tissue culture supernatant by affinity chromatography (protein A/G)
Conjugation:	Unconjugated
Storage:	Store at -20°C as received.
Stability:	Stable for 12 months from date of receipt.
Predicted Protein Size:	68.8 kDa
Gene Name:	kinesin light chain 2
Database Link:	<a href="#">NP_073733</a> <a href="#">Entrez Gene 64837 Human</a> <a href="#">Q9H0B6</a>
Synonyms:	SPOAN
Protein Families:	Druggable Genome

[View online »](#)

## Product images:



HEK293T cells were transfected with the pCMV6-ENTRY control (Left lane) or pCMV6-ENTRY KLC2 ([RC214206], Right lane) cDNA for 48 hrs and lysed. Equivalent amounts of cell lysates (5 ug per lane) were separated by SDS-PAGE and immunoblotted with anti-KLC2 (1:2000). Positive lysates [LY402950] (100ug) and [LC402950] (20ug) can be purchased separately from OriGene.