

Product datasheet for **TA811472BM**

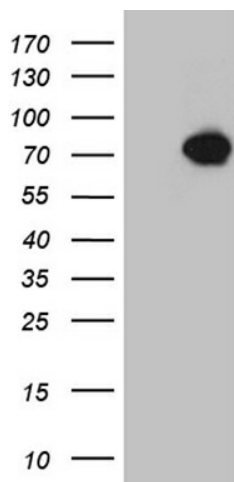
KLC2 Mouse Monoclonal Antibody (HRP conjugated) [Clone ID: OTI2E7]

Product data:

| | |
|-------------------------|---|
| Product Type: | Primary Antibodies |
| Clone Name: | OTI2E7 |
| Applications: | WB |
| Recommended Dilution: | WB 1:2000 |
| Reactivity: | Human, Mouse, Rat |
| Host: | Mouse |
| Isotype: | IgG1 |
| Clonality: | Monoclonal |
| Immunogen: | Human recombinant protein fragment corresponding to amino acids 335-622 of human KLC2 (NP_073733) produced in E.coli. |
| Formulation: | PBS (pH 7.3) containing 1% BSA, 50% glycerol. |
| Concentration: | 0.5 mg/ml |
| Purification: | Purified from mouse ascites fluids or tissue culture supernatant by affinity chromatography (protein A/G) |
| Conjugation: | HRP |
| Storage: | Store at -20°C as received. |
| Stability: | Stable for 12 months from date of receipt. |
| Predicted Protein Size: | 68.8 kDa |
| Gene Name: | kinesin light chain 2 |
| Database Link: | NP_073733 Entrez Gene 64837 Human Q9H0B6 |
| Synonyms: | SPOAN |
| Protein Families: | Druggable Genome |



[View online »](#)

Product images:

HEK293T cells were transfected with the pCMV6-ENTRY control (Left lane) or pCMV6-ENTRY KLC2 ([RC214206], Right lane) cDNA for 48 hrs and lysed. Equivalent amounts of cell lysates (5 ug per lane) were separated by SDS-PAGE and immunoblotted with anti-KLC2 (1:2000). Positive lysates [LY402950] (100ug) and [LC402950] (20ug) can be purchased separately from OriGene.