

Product datasheet for TA811464S

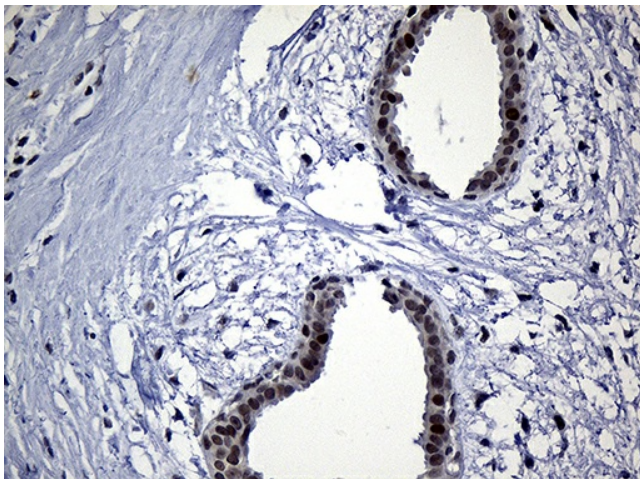
NEMF Mouse Monoclonal Antibody [Clone ID: OTI7E10]

Product data:

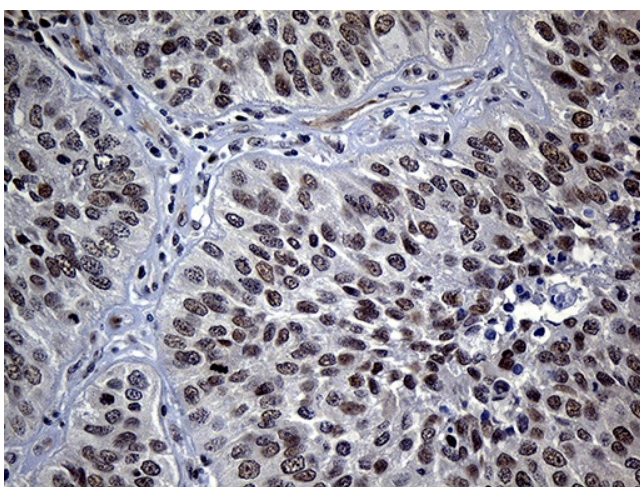
Product Type:	Primary Antibodies
Clone Name:	OTI7E10
Applications:	IHC
Recommended Dilution:	IHC 1:250
Reactivity:	Human, Mouse, Rat
Host:	Mouse
Isotype:	IgG2a
Clonality:	Monoclonal
Immunogen:	Human recombinant protein fragment corresponding to amino acids 869-1076 of human NEMF (NP_004704) produced in E.coli.
Formulation:	PBS (PH 7.3) containing 1% BSA, 50% glycerol and 0.02% sodium azide.
Concentration:	1 mg/ml
Purification:	Purified from mouse ascites fluids or tissue culture supernatant by affinity chromatography (protein A/G)
Storage:	Store at -20°C as received.
Stability:	Stable for 12 months from date of receipt.
Predicted Protein Size:	122.8 kDa
Gene Name:	nuclear export mediator factor
Database Link:	NP_004704 Entrez Gene 66244 MouseEntrez Gene 100322884 RatEntrez Gene 9147 Human
Synonyms:	NY-CO-1; SDCCAG1



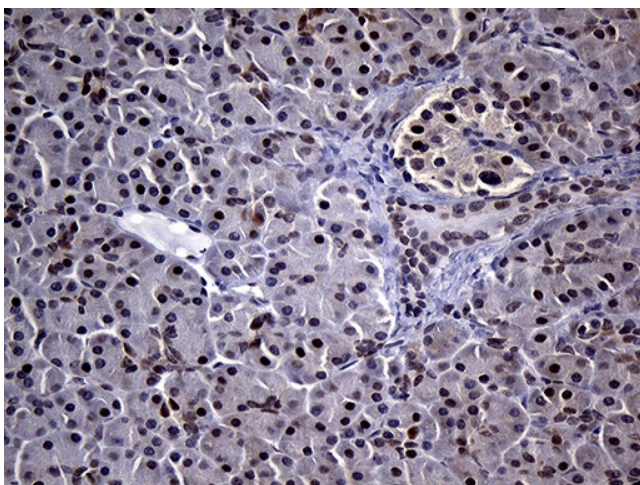
[View online »](#)

Product images:

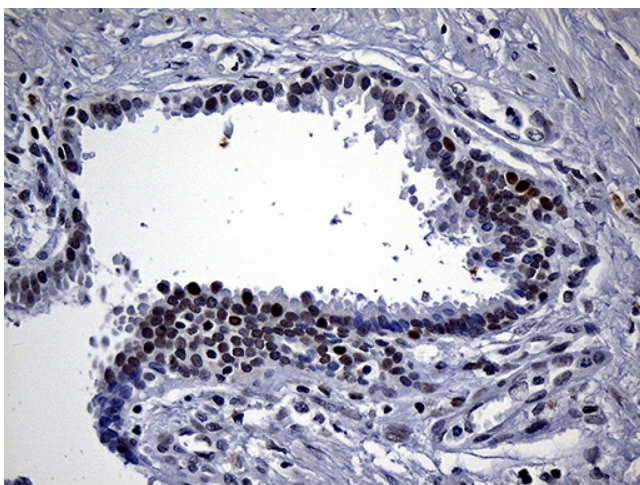
Immunohistochemical staining of paraffin-embedded Human breast tissue within the normal limits using anti-NEMF mouse monoclonal antibody. (Heat-induced epitope retrieval by 1mM EDTA in 10mM Tris buffer (pH8.5) at 120°C for 3min, [TA811464]) (1:250)



Immunohistochemical staining of paraffin-embedded Carcinoma of Human lung tissue using anti-NEMF mouse monoclonal antibody. (Heat-induced epitope retrieval by 1mM EDTA in 10mM Tris buffer (pH8.5) at 120°C for 3min, [TA811464]) (1:250)



Immunohistochemical staining of paraffin-embedded Human pancreas tissue within the normal limits using anti-NEMF mouse monoclonal antibody. (Heat-induced epitope retrieval by 1mM EDTA in 10mM Tris buffer (pH8.5) at 120°C for 3min, [TA811464]) (1:250)



Immunohistochemical staining of paraffin-embedded Carcinoma of Human prostate tissue using anti-NEMF mouse monoclonal antibody. (Heat-induced epitope retrieval by 1mM EDTA in 10mM Tris buffer (pH8.5) at 120°C for 3min, [TA811464]) (1:250)