

## Product datasheet for **TA811464AM**

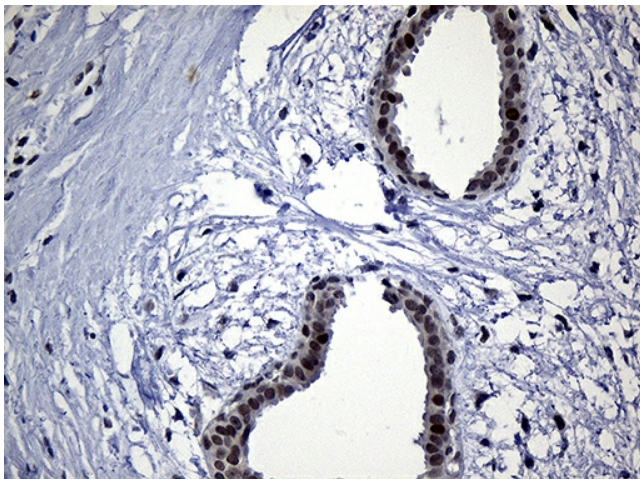
### **NEMF Mouse Monoclonal Antibody (Biotin conjugated) [Clone ID: OTI7E10]**

#### **Product data:**

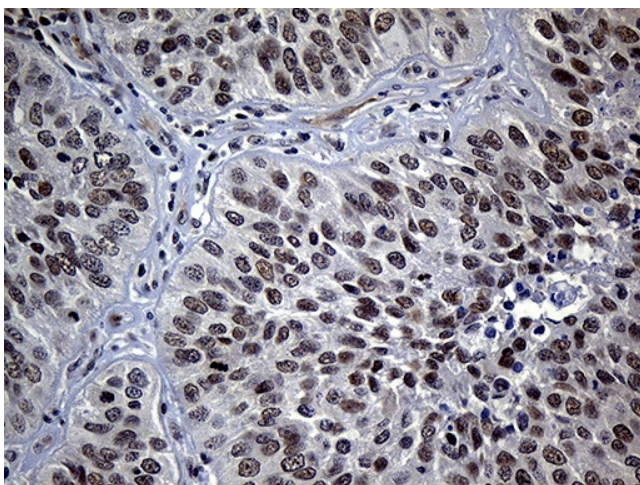
Product Type:	Primary Antibodies
Clone Name:	OTI7E10
Applications:	IHC
Recommended Dilution:	IHC 1:250
Reactivity:	Human, Mouse, Rat
Host:	Mouse
Isotype:	IgG2a
Clonality:	Monoclonal
Immunogen:	Human recombinant protein fragment corresponding to amino acids 869-1076 of human NEMF (NP_004704) produced in E.coli.
Formulation:	PBS (pH 7.3) containing 1% BSA, 50% glycerol and 0.02% sodium azide.
Concentration:	0.5 mg/ml
Purification:	Purified from mouse ascites fluids or tissue culture supernatant by affinity chromatography (protein A/G)
Conjugation:	Biotin
Storage:	Store at -20°C as received.
Stability:	Stable for 12 months from date of receipt.
Predicted Protein Size:	122.8 kDa
Gene Name:	nuclear export mediator factor
Database Link:	<a href="#">NP_004704</a> <a href="#">Entrez Gene 66244 Mouse</a> <a href="#">Entrez Gene 100322884 Rat</a> <a href="#">Entrez Gene 9147 Human</a> <a href="#">O60524</a>
Synonyms:	IDDSAPN; NY-CO-1; SDCCAG1



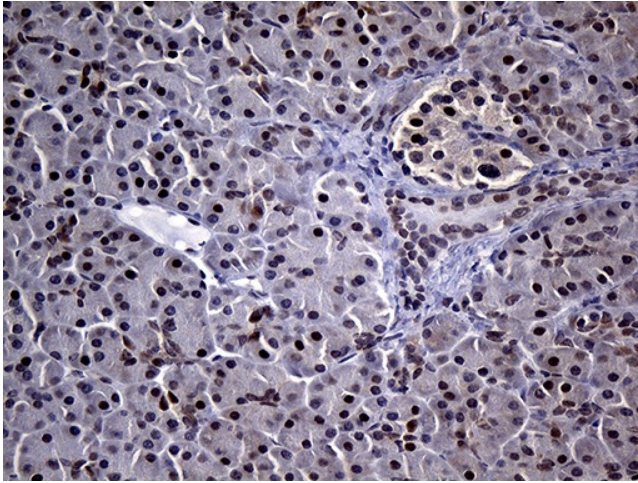
[View online »](#)

**Product images:**

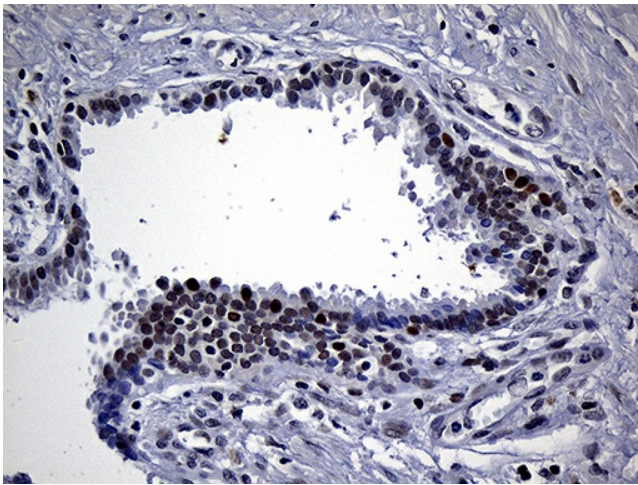
Immunohistochemical staining of paraffin-embedded Human breast tissue within the normal limits using anti-NEMF mouse monoclonal antibody. (Heat-induced epitope retrieval by 1mM EDTA in 10mM Tris buffer (pH8.5) at 120°C for 3min, [TA811464]) (1:250)



Immunohistochemical staining of paraffin-embedded Carcinoma of Human lung tissue using anti-NEMF mouse monoclonal antibody. (Heat-induced epitope retrieval by 1mM EDTA in 10mM Tris buffer (pH8.5) at 120°C for 3min, [TA811464]) (1:250)



Immunohistochemical staining of paraffin-embedded Human pancreas tissue within the normal limits using anti-NEMF mouse monoclonal antibody. (Heat-induced epitope retrieval by 1mM EDTA in 10mM Tris buffer (pH8.5) at 120°C for 3min, [TA811464]) (1:250)



Immunohistochemical staining of paraffin-embedded Carcinoma of Human prostate tissue using anti-NEMF mouse monoclonal antibody. (Heat-induced epitope retrieval by 1mM EDTA in 10mM Tris buffer (pH8.5) at 120°C for 3min, [TA811464]) (1:250)