

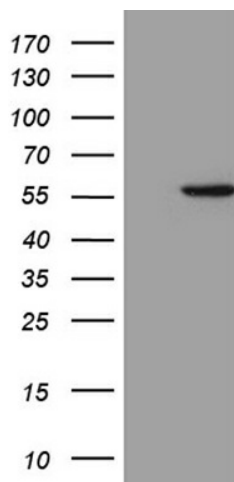
Product datasheet for **TA811463M**

ALDH3B1 Mouse Monoclonal Antibody [Clone ID: OTI2F6]

Product data:

| | |
|-----------------------|--|
| Product Type: | Primary Antibodies |
| Clone Name: | OTI2F6 |
| Applications: | WB |
| Recommended Dilution: | WB 1:2000 |
| Reactivity: | Human, Rat |
| Host: | Mouse |
| Isotype: | IgG1 |
| Clonality: | Monoclonal |
| Immunogen: | Human recombinant protein fragment corresponding to amino acids 1-465 of human ALDH3B1 (NP_000685) produced in E.coli. |
| Formulation: | PBS (pH 7.3) containing 1% BSA, 50% glycerol and 0.02% sodium azide. |
| Concentration: | 1 mg/ml |
| Purification: | Purified from mouse ascites fluids or tissue culture supernatant by affinity chromatography (protein A/G) |
| Conjugation: | Unconjugated |
| Storage: | Store at -20°C as received. |
| Stability: | Stable for 12 months from date of receipt. |
| Gene Name: | aldehyde dehydrogenase 3 family member B1 |
| Database Link: | NP_000685 Entrez Gene 309147 Rat Entrez Gene 221 Human P43353 |
| Synonyms: | ALDH4; ALDH7 |
| Protein Families: | Druggable Genome |
| Protein Pathways: | Drug metabolism - cytochrome P450, Glycolysis / Gluconeogenesis, Histidine metabolism, Metabolic pathways, Metabolism of xenobiotics by cytochrome P450, Phenylalanine metabolism, Tyrosine metabolism |


[View online »](#)

Product images:

HEK293T cells were transfected with the pCMV6-ENTRY control (Cat# [PS100001], Left lane) or pCMV6-ENTRY ALDH3B1 (Cat# [RC202242], Right lane) cDNA for 48 hrs and lysed. Equivalent amounts of cell lysates (5 ug per lane) were separated by SDS-PAGE and immunoblotted with anti-ALDH3B1 (Cat# [TA811463])(1:2000).