

Product datasheet for **TA811462BM**

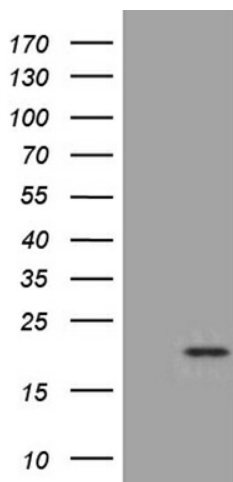
SEC11A Mouse Monoclonal Antibody (HRP conjugated) [Clone ID: OTI1A12]

Product data:

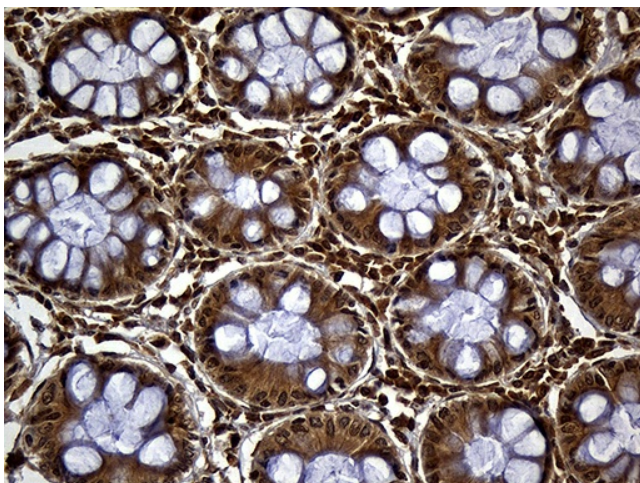
| | |
|-------------------------|---|
| Product Type: | Primary Antibodies |
| Clone Name: | OTI1A12 |
| Applications: | IHC, WB |
| Recommended Dilution: | WB 1:2000, IHC 1:150 |
| Reactivity: | Human, Mouse, Rat |
| Host: | Mouse |
| Isotype: | IgG2b |
| Clonality: | Monoclonal |
| Immunogen: | Full length human recombinant protein of human SEC11A (NP_055115) produced in E.coli. |
| Formulation: | PBS (pH 7.3) containing 1% BSA, 50% glycerol. |
| Concentration: | 0.5 mg/ml |
| Purification: | Purified from mouse ascites fluids or tissue culture supernatant by affinity chromatography (protein A/G) |
| Conjugation: | HRP |
| Storage: | Store at -20°C as received. |
| Stability: | Stable for 12 months from date of receipt. |
| Predicted Protein Size: | 20.4 kDa |
| Gene Name: | SEC11 homolog A, signal peptidase complex subunit |
| Database Link: | NP_055115 Entrez Gene 23478 Human P67812 |
| Synonyms: | 1810012E07Rik; SEC11L1; sid2895; SPC18; SPCS4A |
| Protein Families: | Druggable Genome, Protease, Transmembrane |
| Protein Pathways: | Protein export |



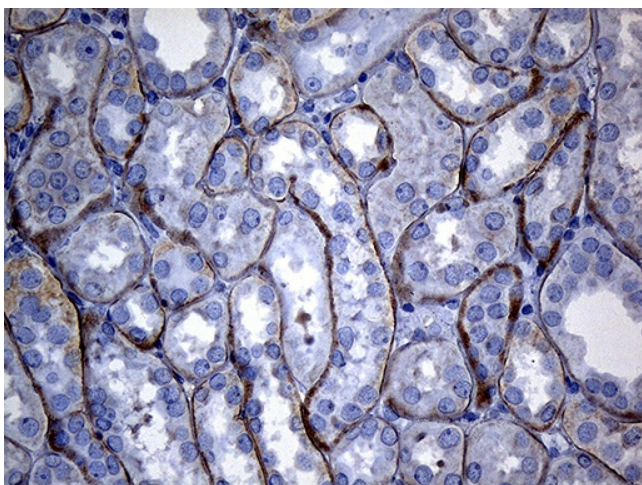
[View online »](#)

Product images:

HEK293T cells were transfected with the pCMV6-ENTRY control (Cat# [PS100001], Left lane) or pCMV6-ENTRY SEC11A (Cat# [RC204971], Right lane) cDNA for 48 hrs and lysed. Equivalent amounts of cell lysates (5 ug per lane) were separated by SDS-PAGE and immunoblotted with anti-SEC11A (Cat# [TA811462])(1:2000). Positive lysates [LY402308] (100ug) and [LC402308] (20ug) can be purchased separately from OriGene.



Immunohistochemical staining of paraffin-embedded Human colon tissue within the normal limits using anti-SEC11A mouse monoclonal antibody. (Heat-induced epitope retrieval by 1mM EDTA in 10mM Tris buffer (pH8.5) at 120°C for 3min, [TA811462]) (1:150)



Immunohistochemical staining of paraffin-embedded Human Kidney tissue within the normal limits using anti-SEC11A mouse monoclonal antibody. (Heat-induced epitope retrieval by 1mM EDTA in 10mM Tris buffer (pH8.5) at 120°C for 3min, [TA811462]) (1:150)