

Product datasheet for **TA811460AM**

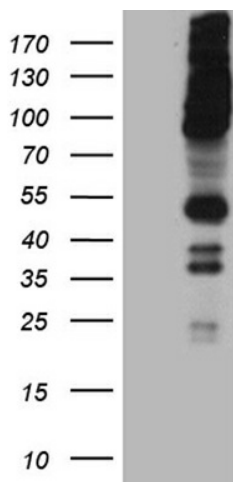
RUSC2 Mouse Monoclonal Antibody (Biotin conjugated) [Clone ID: OTI1A1]

Product data:

Product Type:	Primary Antibodies
Clone Name:	OTI1A1
Applications:	WB
Recommended Dilution:	WB 1:2000
Reactivity:	Human, Mouse, Rat
Host:	Mouse
Isotype:	IgG1
Clonality:	Monoclonal
Immunogen:	Human recombinant protein fragment corresponding to amino acids 1176-1516 of human RUSC2 (NP_055621) produced in E.coli.
Formulation:	PBS (pH 7.3) containing 1% BSA, 50% glycerol and 0.02% sodium azide.
Concentration:	0.5 mg/ml
Purification:	Purified from mouse ascites fluids or tissue culture supernatant by affinity chromatography (protein A/G)
Conjugation:	Biotin
Storage:	Store at -20°C as received.
Stability:	Stable for 12 months from date of receipt.
Gene Name:	RUN and SH3 domain containing 2
Database Link:	NP_055621 Entrez Gene 100213 Mouse Entrez Gene 9853 Human Q8N2Y8
Background:	This gene encodes a RUN and SH3 domain containing protein that interacts with Rab1b and Rab1-binding protein GM130. Alternatively spliced transcript variants have been observed for this gene. [provided by RefSeq, Jun 2012]
Synonyms:	Iporin



[View online »](#)

Product images:

HEK293T cells were transfected with the pCMV6-ENTRY control (Cat# [PS100001], Left lane) or pCMV6-ENTRY RUSC2 (Cat# [RC215610], Right lane) cDNA for 48 hrs and lysed. Equivalent amounts of cell lysates (5 ug per lane) were separated by SDS-PAGE and immunoblotted with anti-RUSC2 (Cat# [TA811460])(1:2000). Positive lysates [LY415015] (100ug) and [LC415015] (20ug) can be purchased separately from OriGene.