

Product datasheet for **TA811457AM**

FAM119A (METTL21A) Mouse Monoclonal Antibody (Biotin conjugated) [Clone ID: OTI2A8]

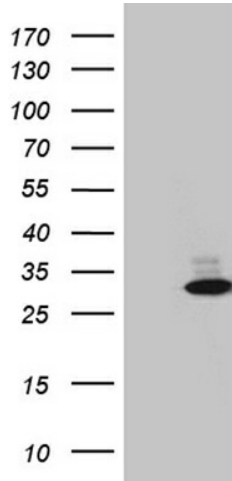
Product data:

Product Type:	Primary Antibodies
Clone Name:	OTI2A8
Applications:	WB
Recommended Dilution:	WB 1:2000
Reactivity:	Human, Mouse, Rat
Host:	Mouse
Isotype:	IgG1
Clonality:	Monoclonal
Immunogen:	Full length human recombinant protein of human METTL21A (NP_001120867) produced in E.coli.
Formulation:	PBS (pH 7.3) containing 1% BSA, 50% glycerol and 0.02% sodium azide.
Concentration:	0.5 mg/ml
Purification:	Purified from mouse ascites fluids or tissue culture supernatant by affinity chromatography (protein A/G)
Conjugation:	Biotin
Storage:	Store at -20°C as received.
Stability:	Stable for 12 months from date of receipt.
Gene Name:	methyltransferase like 21A
Database Link:	NP_001120867 Entrez Gene 67099 Mouse Entrez Gene 102553119 Rat Entrez Gene 151194 Human Q8WXB1
Synonyms:	FAM119A; HCA557b; HSPA-KMT



[View online »](#)

Product images:



HEK293T cells were transfected with the pCMV6-ENTRY control (Left lane) or pCMV6-ENTRY METTL21A [RC225260], Right lane) cDNA for 48 hrs and lysed. Equivalent amounts of cell lysates (5 ug per lane) were separated by SDS-PAGE and immunoblotted with anti-METTL21A (1:2000). Positive lysates [LY426777] (100ug) and [LC426777] (20ug) can be purchased separately from OriGene.