

## Product datasheet for **TA811445AM**

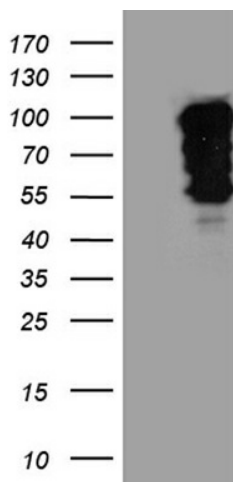
### **SH3BP1 Mouse Monoclonal Antibody (Biotin conjugated) [Clone ID: OTI2F4]**

#### **Product data:**

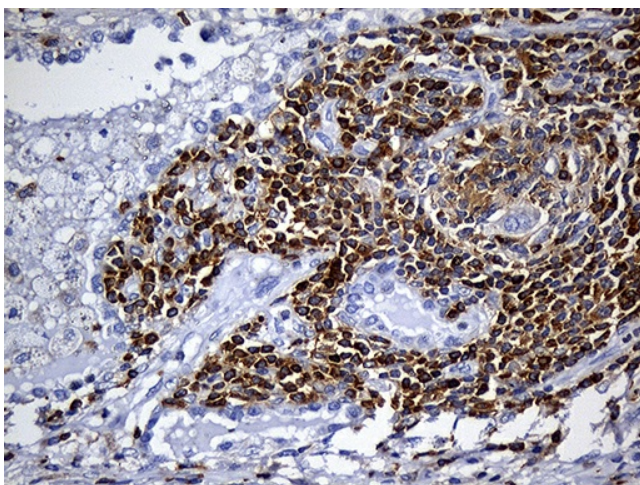
|                         |   |
|-------------------------|---|
| Product Type:           | Primary Antibodies  |
| Clone Name:             | OTI2F4  |
| Applications:           | IHC, WB   |
| Recommended Dilution:   | WB 1:2000, IHC 1:500  |
| Reactivity:             | Human, Mouse  |
| Host:                   | Mouse   |
| Isotype:                | IgG1  |
| Clonality:              | Monoclonal  |
| Immunogen:              | Full length human recombinant protein of human SH3BP1 (NP_061830) produced in HEK293T cell.               |
| Formulation:            | PBS (pH 7.3) containing 1% BSA, 50% glycerol and 0.02% sodium azide.                                      |
| Concentration:          | 0.5 mg/ml   |
| Purification:           | Purified from mouse ascites fluids or tissue culture supernatant by affinity chromatography (protein A/G) |
| Conjugation:            | Biotin  |
| Storage:                | Store at -20°C as received.   |
| Stability:              | Stable for 12 months from date of receipt.  |
| Predicted Protein Size: | 75.5 kDa  |
| Gene Name:              | SH3 domain binding protein 1  |
| Database Link:          | <a href="#">NP_061830</a><br><a href="#">Entrez Gene 23616 Human</a><br><a href="#">Q9Y3L3</a>            |
| Synonyms:               | ARHGAP43  |



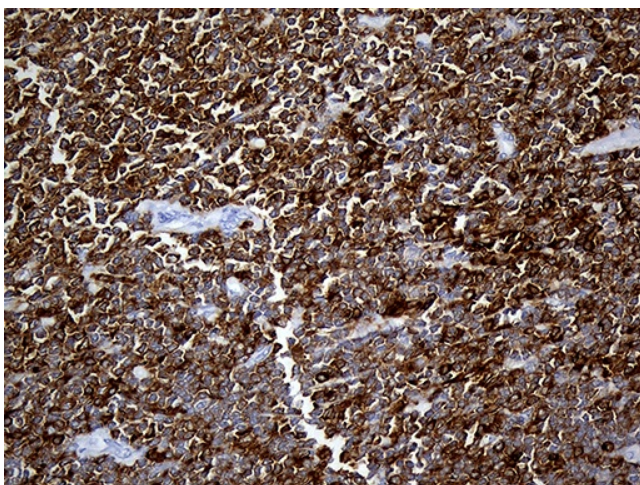
[View online »](#)

**Product images:**

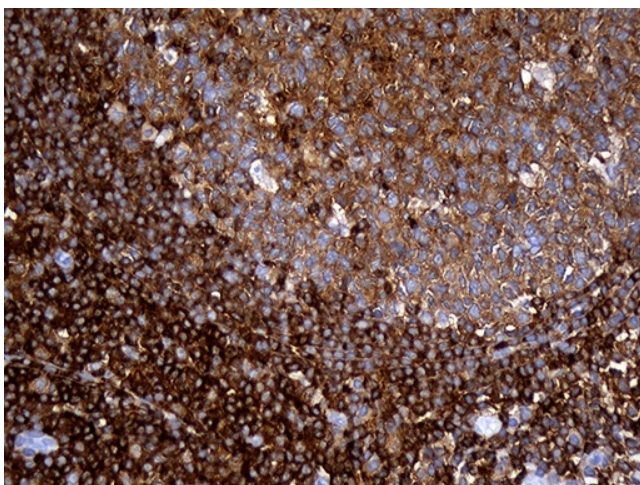
HEK293T cells were transfected with the pCMV6-ENTRY control (Left lane) or pCMV6-ENTRY SH3BP1 ([RC219860], Right lane) cDNA for 48 hrs and lysed. Equivalent amounts of cell lysates (5 ug per lane) were separated by SDS-PAGE and immunoblotted with anti-SH3BP1 (1:2000). Positive lysates [LY412861] (100ug) and [LC412861] (20ug) can be purchased separately from OriGene.



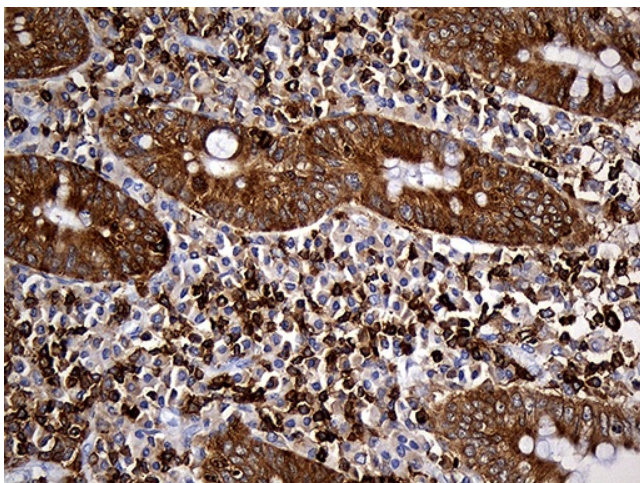
Immunohistochemical staining of paraffin-embedded Carcinoma of Human lung tissue using anti-SH3BP1 mouse monoclonal antibody. (Heat-induced epitope retrieval by 1mM EDTA in 10mM Tris buffer (pH8.5) at 120°C for 3min, [TA811445]) (1:500)



Immunohistochemical staining of paraffin-embedded Human lymphoma tissue using anti-SH3BP1 mouse monoclonal antibody. (Heat-induced epitope retrieval by 1mM EDTA in 10mM Tris buffer (pH8.5) at 120°C for 3min, [TA811445]) (1:500)



Immunohistochemical staining of paraffin-embedded Human tonsil within the normal limits using anti-SH3BP1 mouse monoclonal antibody. (Heat-induced epitope retrieval by 1mM EDTA in 10mM Tris buffer (pH8.5) at 120°C for 3min, [TA811445]) (1:500)



Immunohistochemical staining of paraffin-embedded Human appendix tissue within the normal limits using anti-SH3BP1 mouse monoclonal antibody. (Heat-induced epitope retrieval by 1mM EDTA in 10mM Tris buffer (pH8.5) at 120°C for 3min, [TA811445]) (1:500)