

## Product datasheet for **TA811425S**

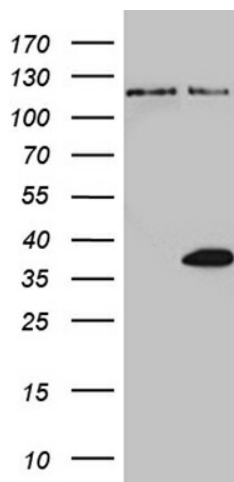
### THAP8 Mouse Monoclonal Antibody [Clone ID: OTI4F7]

#### Product data:

Product Type:	Primary Antibodies
Clone Name:	OTI4F7
Applications:	WB
Recommended Dilution:	WB 1:2000
Reactivity:	Human
Host:	Mouse
Isotype:	IgG1
Clonality:	Monoclonal
Immunogen:	Human recombinant protein fragment corresponding to amino acids 86-274 of human THAP8 (NP_689871) produced in E.coli.
Formulation:	PBS (pH 7.3) containing 1% BSA, 50% glycerol and 0.02% sodium azide.
Concentration:	1 mg/ml
Purification:	Purified from mouse ascites fluids or tissue culture supernatant by affinity chromatography (protein A/G)
Conjugation:	Unconjugated
Storage:	Store at -20°C as received.
Stability:	Stable for 12 months from date of receipt.
Gene Name:	THAP domain containing 8
Database Link:	<a href="#">NP_689871</a> <a href="#">Entrez Gene 199745 Human</a> <a href="#">Q8NA92</a>
Synonyms:	FLJ32891



[View online »](#)

**Product images:**

HEK293T cells were transfected with the pCMV6-ENTRY control (Left lane) or pCMV6-ENTRY THAP8 ([RC210066], Right lane) cDNA for 48 hrs and lysed. Equivalent amounts of cell lysates (5 ug per lane) were separated by SDS-PAGE and immunoblotted with anti-THAP8 (1:2000). Positive lysates [LY407383] (100ug) and [LC407383] (20ug) can be purchased separately from OriGene.