

## Product datasheet for **TA811422S**

### **CABLES1 Mouse Monoclonal Antibody [Clone ID: OTI2A3]**

#### **Product data:**

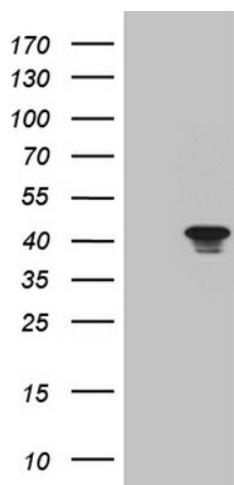
Product Type:	Primary Antibodies
Clone Name:	OTI2A3
Applications:	WB
Recommended Dilution:	WB 1:500
Reactivity:	Human, Mouse, Rat
Host:	Mouse
Isotype:	IgG1
Clonality:	Monoclonal
Immunogen:	Full length human recombinant protein of human CABLES1 (NP_612384) produced in E.coli.
Formulation:	PBS (pH 7.3) containing 1% BSA, 50% glycerol and 0.02% sodium azide.
Concentration:	1 mg/ml
Purification:	Purified from mouse ascites fluids or tissue culture supernatant by affinity chromatography (protein A/G)
Conjugation:	Unconjugated
Storage:	Store at -20°C as received.
Stability:	Stable for 12 months from date of receipt.
Predicted Protein Size:	41.7 kDa
Gene Name:	Cdk5 and Abl enzyme substrate 1
Database Link:	<a href="#">NP_612384</a> <a href="#">Entrez Gene 63955 Mouse</a> <a href="#">Entrez Gene 307585 Rat</a> <a href="#">Entrez Gene 91768 Human</a> <a href="#">Q8TDN4</a>
Background:	This gene encodes a protein involved in regulation of the cell cycle through interactions with several cyclin-dependent kinases. One study (PMID: 16177568) reported aberrant splicing of transcripts from this gene which results in removal of the cyclin binding domain only in human cancer cells, and reduction in gene expression was shown in colorectal cancers (PMID: 17982127). Multiple transcript variants encoding different isoforms have been found for this gene. [provided by RefSeq, Jan 2012]



[View online »](#)

Synonyms: CABL1; CABLES; HsT2563; IK3-1

### Product images:



HEK293T cells were transfected with the pCMV6-ENTRY control (Cat# [PS100001], Left lane) or pCMV6-ENTRY CABLES1 (Cat# [RC206794], Right lane) cDNA for 48 hrs and lysed. Equivalent amounts of cell lysates (5 ug per lane) were separated by SDS-PAGE and immunoblotted with anti-CABLES1 (Cat# [TA811422]). Positive lysates [LY408642] (100ug) and [LC408642] (20ug) can be purchased separately from OriGene.