

Product datasheet for **TA811413**

PPP2R1B Mouse Monoclonal Antibody [Clone ID: OTI8B6]

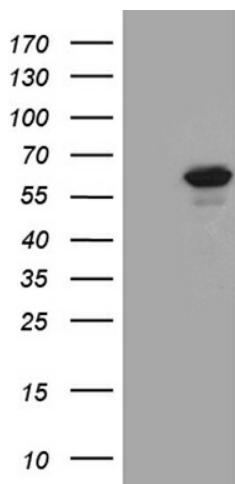
Product data:

Product Type:	Primary Antibodies
Clone Name:	OTI8B6
Applications:	IHC, WB
Recommended Dilution:	WB 1:500~2000, IHC 1:500
Reactivity:	Human, Mouse, Rat
Host:	Mouse
Isotype:	IgG1
Clonality:	Monoclonal
Immunogen:	Human recombinant protein fragment corresponding to amino acids 19-601 of human PPP2R1B (NP_859050) produced in E.coli.
Formulation:	PBS (pH 7.3) containing 1% BSA, 50% glycerol and 0.02% sodium azide.
Concentration:	1 mg/ml
Purification:	Purified from mouse ascites fluids or tissue culture supernatant by affinity chromatography (protein A/G)
Conjugation:	Unconjugated
Storage:	Store at -20°C as received.
Stability:	Stable for 12 months from date of receipt.
Gene Name:	protein phosphatase 2 scaffold subunit Abeta
Database Link:	NP_001171033 Entrez Gene 73699 Mouse Entrez Gene 315648 Rat Entrez Gene 5519 Human P30154
Synonyms:	PP2A-Abeta; PR65B
Protein Families:	Druggable Genome, Phosphatase, Transcription Factors
Protein Pathways:	Long-term depression, Oocyte meiosis, TGF-beta signaling pathway, Tight junction, Wnt signaling pathway

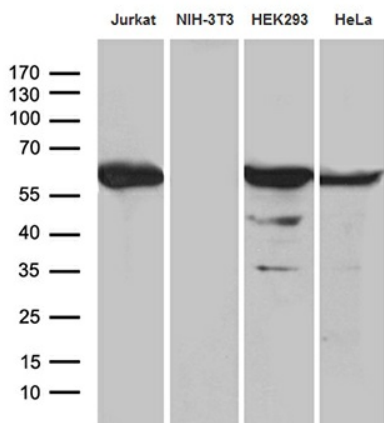


[View online »](#)

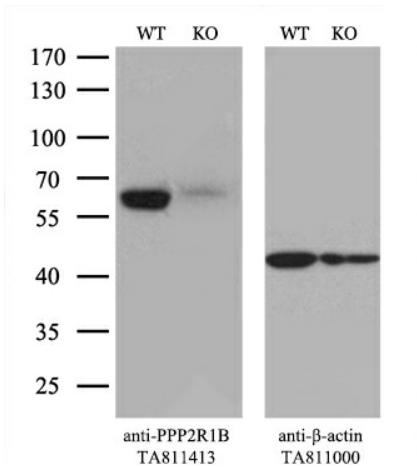
Product images:



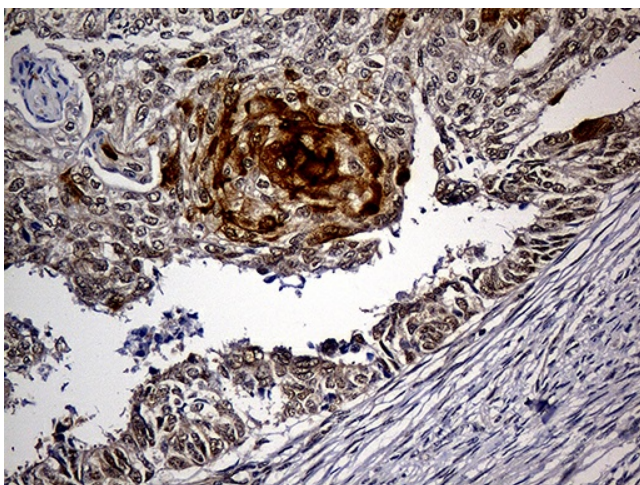
HEK293T cells were transfected with the pCMV6-ENTRY control (Cat# [PS100001], Left lane) or pCMV6-ENTRY PPP2R1B (Cat# [RC230265], Right lane) cDNA for 48 hrs and lysed. Equivalent amounts of cell lysates (5 ug per lane) were separated by SDS-PAGE and immunoblotted with anti-PPP2R1B (Cat# TA811413)(1:2000). Positive lysates [LY433265] (100ug) and [LC433265] (20ug) can be purchased separately from OriGene.



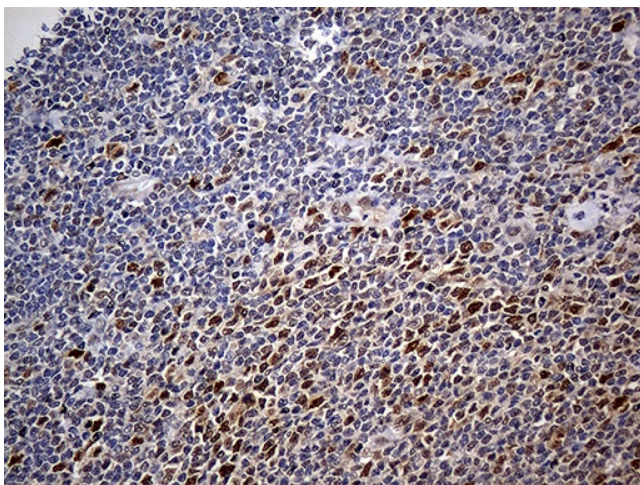
Western blot analysis of extracts (35ug) from 4 different cell lines by using anti-PPP2R1B monoclonal antibody (1:500).



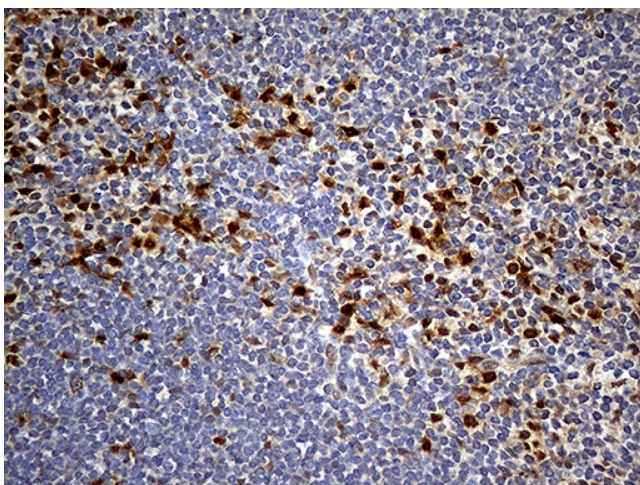
Equivalent amounts of cell lysates (10 ug per lane) of wild-type 293T cells (WT, Cat# LC810293T) and PPP2R1B-Knockout 293T cells (KO, Cat# [LC811012]) were separated by SDS-PAGE and immunoblotted with anti-PPP2R1B monoclonal antibody TA811413, (1:500). Then the blotted membrane was stripped and reprobed with anti-β-actin antibody ([TA811000]) as a loading control.



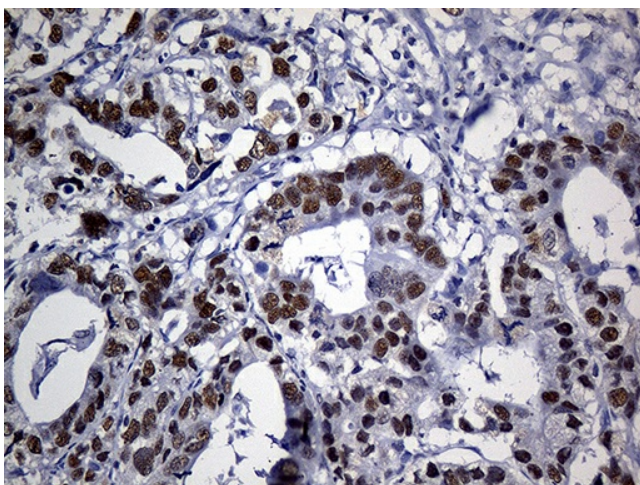
Immunohistochemical staining of paraffin-embedded Adenocarcinoma of Human endometrium tissue using anti-PPP2R1B mouse monoclonal antibody. Heat-induced epitope retrieval by EDTA solution buffer pH 8.0 at 120°C for 3 min.



Immunohistochemical staining of paraffin-embedded Human lymphoma tissue using anti-PPP2R1B mouse monoclonal antibody. Heat-induced epitope retrieval by EDTA solution buffer pH 8.0 at 120°C for 3 min.



Immunohistochemical staining of paraffin-embedded Human tonsil within the normal limits using anti-PPP2R1B mouse monoclonal antibody. Heat-induced epitope retrieval by EDTA solution buffer pH 8.0 at 120°C for 3 min.



Immunohistochemical staining of paraffin-embedded Human gastric stromal tumor tissue using anti-PPP2R1B mouse monoclonal antibody. Heat-induced epitope retrieval by EDTA solution buffer pH 8.0 at 120°C for 3 min.