

## Product datasheet for **TA811411**

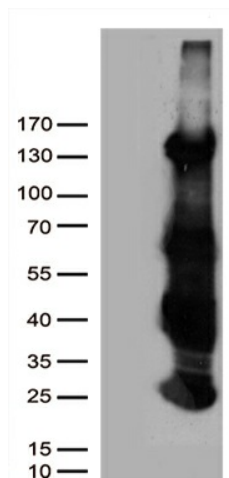
### HS1BP3 Mouse Monoclonal Antibody [Clone ID: OTI10D9]

#### Product data:

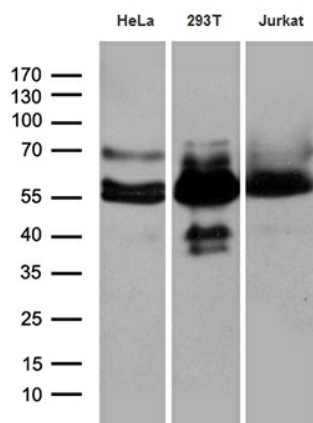
Product Type:	Primary Antibodies
Clone Name:	OTI10D9
Applications:	IHC, WB
Recommended Dilution:	WB 1:500, IHC 1:500
Reactivity:	Human
Host:	Mouse
Isotype:	IgG2b
Clonality:	Monoclonal
Immunogen:	Human recombinant protein fragment corresponding to amino acids 145-392 of human HS1BP3 (NP_071905) produced in E.coli.
Formulation:	PBS (pH 7.3) containing 1% BSA, 50% glycerol and 0.02% sodium azide.
Concentration:	1 mg/ml
Purification:	Purified from mouse ascites fluids or tissue culture supernatant by affinity chromatography (protein A/G)
Conjugation:	Unconjugated
Storage:	Store at -20°C as received.
Stability:	Stable for 12 months from date of receipt.
Gene Name:	HCLS1 binding protein 3
Database Link:	<a href="#">NP_071905</a> <a href="#">Entrez Gene 64342 Human</a> <a href="#">Q53T59</a>
Background:	The protein encoded by this gene shares similarity with mouse Hs1bp3, an Hcls1/Hs1-interacting protein that may be involved in lymphocyte activation. [provided by RefSeq, Jul 2008]
Synonyms:	ETM2; HS1-BP3



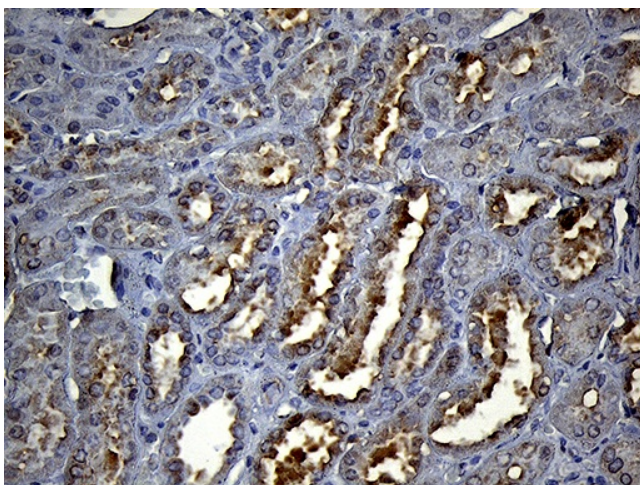
[View online »](#)

**Product images:**


HEK293T cells were transfected with the pCMV6-ENTRY control (Cat# [PS100001], Left lane) or pCMV6-ENTRY HS1BP3 (Cat# [RC208668], Right lane) cDNA for 48 hrs and lysed. Equivalent amounts of cell lysates (5 ug per lane) were separated by SDS-PAGE and immunoblotted with anti-HS1BP3 (Cat# TA811411)(1:5000). Positive lysates [LY411675] (100ug) and [LC411675] (20ug) can be purchased separately from OriGene.



Western blot analysis of extracts (35ug) from 3 different cell lines by using anti-HS1BP3 monoclonal antibody (1:500).



Immunohistochemical staining of paraffin-embedded Human Kidney tissue within the normal limits using anti-HS1BP3 mouse monoclonal antibody. (Heat-induced epitope retrieval by 1mM EDTA in 10mM Tris buffer (pH8.5) at 120°C for 3min, TA811411) (1:500)