

## Product datasheet for **TA811410S**

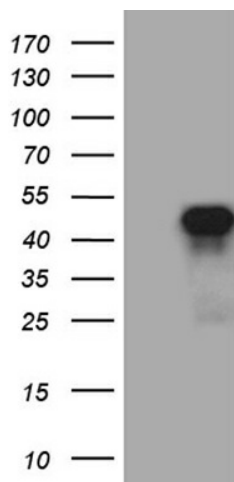
### SIX3 Mouse Monoclonal Antibody [Clone ID: OTI7G9]

#### Product data:

Product Type:	Primary Antibodies
Clone Name:	OTI7G9
Applications:	WB
Recommended Dilution:	WB 1:2000
Reactivity:	Human, Mouse, Rat
Host:	Mouse
Isotype:	IgG1
Clonality:	Monoclonal
Immunogen:	Human recombinant protein fragment corresponding to amino acids 142-332 of human SIX3 (NP_005404) produced in E.coli.
Formulation:	PBS (pH 7.3) containing 1% BSA, 50% glycerol and 0.02% sodium azide.
Concentration:	1 mg/ml
Purification:	Purified from mouse ascites fluids or tissue culture supernatant by affinity chromatography (protein A/G)
Conjugation:	Unconjugated
Storage:	Store at -20°C as received.
Stability:	Stable for 12 months from date of receipt.
Gene Name:	SIX homeobox 3
Database Link:	<a href="#">NP_005404</a> <a href="#">Entrez Gene 20473 Mouse</a> <a href="#">Entrez Gene 78974 Rat</a> <a href="#">Entrez Gene 6496 Human</a> <a href="#">O95343</a>
Background:	This gene encodes a member of the sine oculis homeobox transcription factor family. The encoded protein plays a role in eye development. Mutations in this gene have been associated with holoprosencephaly type 2. [provided by RefSeq, Oct 2009]
Synonyms:	HPE2
Protein Families:	Druggable Genome



[View online »](#)

**Product images:**

HEK293T cells were transfected with the pCMV6-ENTRY control (Cat# [PS100001], Left lane) or pCMV6-ENTRY SIX3 (Cat# [RC216286], Right lane) cDNA for 48 hrs and lysed. Equivalent amounts of cell lysates (5 ug per lane) were separated by SDS-PAGE and immunoblotted with anti-SIX3 (Cat# [TA811410])(1:2000). Positive lysates [LY401662] (100ug) and [LC401662] (20ug) can be purchased separately from OriGene.