

## Product datasheet for **TA811410M**

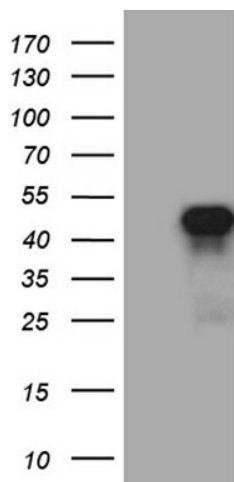
### **SIX3 Mouse Monoclonal Antibody [Clone ID: OTI7G9]**

#### **Product data:**

|                       |  |
|-----------------------|--|
| Product Type:         | Primary Antibodies   |
| Clone Name:           | OTI7G9   |
| Applications:         | WB   |
| Recommended Dilution: | WB 1:2000  |
| Reactivity:           | Human, Mouse, Rat  |
| Host:                 | Mouse  |
| Isotype:              | IgG1   |
| Clonality:            | Monoclonal   |
| Immunogen:            | Human recombinant protein fragment corresponding to amino acids 142-332 of human SIX3 (NP_005404) produced in E.coli.  |
| Formulation:          | PBS (pH 7.3) containing 1% BSA, 50% glycerol and 0.02% sodium azide.   |
| Concentration:        | 1 mg/ml  |
| Purification:         | Purified from mouse ascites fluids or tissue culture supernatant by affinity chromatography (protein A/G)  |
| Conjugation:          | Unconjugated   |
| Storage:              | Store at -20°C as received.  |
| Stability:            | Stable for 12 months from date of receipt.   |
| Gene Name:            | SIX homeobox 3   |
| Database Link:        | <a href="#">NP_005404</a><br><a href="#">Entrez Gene 20473 Mouse</a> <a href="#">Entrez Gene 78974 Rat</a> <a href="#">Entrez Gene 6496 Human</a><br><a href="#">O95343</a>  |
| Background:           | This gene encodes a member of the sine oculis homeobox transcription factor family. The encoded protein plays a role in eye development. Mutations in this gene have been associated with holoprosencephaly type 2. [provided by RefSeq, Oct 2009] |
| Synonyms:             | HPE2   |
| Protein Families:     | Druggable Genome   |



[View online »](#)

**Product images:**


HEK293T cells were transfected with the pCMV6-ENTRY control (Cat# [PS100001], Left lane) or pCMV6-ENTRY SIX3 (Cat# [RC216286], Right lane) cDNA for 48 hrs and lysed. Equivalent amounts of cell lysates (5 ug per lane) were separated by SDS-PAGE and immunoblotted with anti-SIX3 (Cat# [TA811410])(1:2000). Positive lysates [LY401662] (100ug) and [LC401662] (20ug) can be purchased separately from OriGene.