

Product datasheet for **TA811409M**

BRCC36 (BRCC3) Mouse Monoclonal Antibody [Clone ID: OTI6G7]

Product data:

Product Type:	Primary Antibodies
Clone Name:	OTI6G7
Applications:	WB
Recommended Dilution:	WB 1:500
Reactivity:	Human, Mouse, Rat
Host:	Mouse
Isotype:	IgG1
Clonality:	Monoclonal
Immunogen:	Human recombinant protein fragment corresponding to amino acids 41-316 of human BRCC3 (NP_077308) produced in E.coli.
Formulation:	PBS (pH 7.3) containing 1% BSA, 50% glycerol and 0.02% sodium azide.
Concentration:	1 mg/ml
Purification:	Purified from mouse ascites fluids or tissue culture supernatant by affinity chromatography (protein A/G)
Conjugation:	Unconjugated
Storage:	Store at -20°C as received.
Stability:	Stable for 12 months from date of receipt.
Gene Name:	BRCA1/BRCA2-containing complex subunit 3
Database Link:	NP_077308 Entrez Gene 210766 Mouse Entrez Gene 316794 Rat Entrez Gene 79184 Human P46736

[View online »](#)

Background:

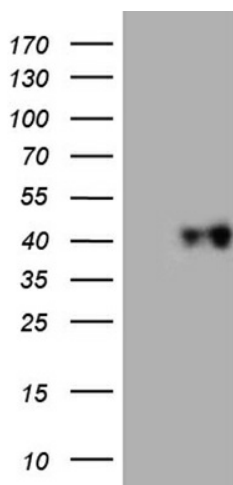
This gene encodes a subunit of the BRCA1-BRCA2-containing complex (BRCC), which is an E3 ubiquitin ligase. This complex plays a role in the DNA damage response, where it is responsible for the stable accumulation of BRCA1 at DNA break sites. The component encoded by this gene can specifically cleave Lys 63-linked polyubiquitin chains, and it regulates the abundance of these polyubiquitin chains in chromatin. The loss of this gene results in abnormal angiogenesis and is associated with syndromic moyamoya, a cerebrovascular angiopathy. Alternative splicing results in multiple transcript variants. A related pseudogene has been identified on chromosome 5. [provided by RefSeq, Jun 2011]

Synonyms:

BRCC36; C6.1A; CXorf53

Protein Families:

Druggable Genome, Protease

Product images:


HEK293T cells were transfected with the pCMV6-ENTRY control (Cat# [PS100001], Left lane) or pCMV6-ENTRY BRCC3 (Cat# [RC200727], Right lane) cDNA for 48 hrs and lysed. Equivalent amounts of cell lysates (5 ug per lane) were separated by SDS-PAGE and immunoblotted with anti-BRCC3 (Cat# [TA811409])(1:500). Positive lysates [LY411291] (100ug) and [LC411291] (20ug) can be purchased separately from OriGene.