

Product datasheet for **TA811408S**

LIMS2 Mouse Monoclonal Antibody [Clone ID: OTI5H8]

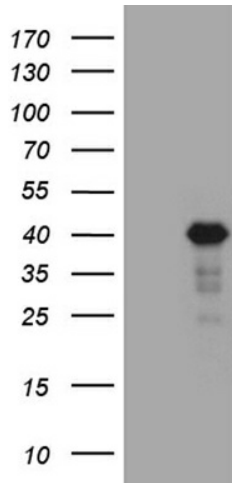
Product data:

| | |
|-------------------------|---|
| Product Type: | Primary Antibodies |
| Clone Name: | OTI5H8 |
| Applications: | WB |
| Recommended Dilution: | WB 1:500~2000 |
| Reactivity: | Human, Mouse, Rat |
| Host: | Mouse |
| Isotype: | IgG1 |
| Clonality: | Monoclonal |
| Immunogen: | Human recombinant protein fragment corresponding to amino acids 1-363 of human LIMS2 (NP_060450) produced in E.coli. |
| Formulation: | PBS (pH 7.3) containing 1% BSA, 50% glycerol and 0.02% sodium azide. |
| Concentration: | 1 mg/ml |
| Purification: | Purified from mouse ascites fluids or tissue culture supernatant by affinity chromatography (protein A/G) |
| Conjugation: | Unconjugated |
| Storage: | Store at -20°C as received. |
| Stability: | Stable for 12 months from date of receipt. |
| Predicted Protein Size: | 41.3 kDa |
| Gene Name: | LIM zinc finger domain containing 2 |
| Database Link: | NP_060450 Entrez Gene 225341 MouseEntrez Gene 361303 RatEntrez Gene 55679 Human Q7Z4I7 |
| Synonyms: | LGMD2W; PINCH-2; PINCH2 |

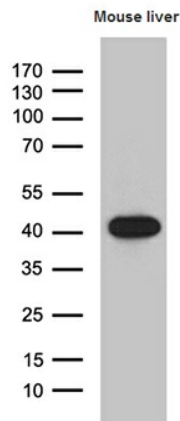


[View online »](#)

Product images:



HEK293T cells were transfected with the pCMV6-ENTRY control (Cat# [PS100001], Left lane) or pCMV6-ENTRY LIMS2 (Cat# [RC213746], Right lane) cDNA for 48 hrs and lysed. Equivalent amounts of cell lysates (5 ug per lane) were separated by SDS-PAGE and immunoblotted with anti-LIMS2 (Cat# [TA811408])(1:2000). Positive lysates [LY413411] (100ug) and [LC413411] (20ug) can be purchased separately from OriGene.



Western blot analysis of extracts (35ug) from mouse liver tissue lysate by using anti-LIMS2 monoclonal antibody (1:500).