

## Product datasheet for **TA811408M**

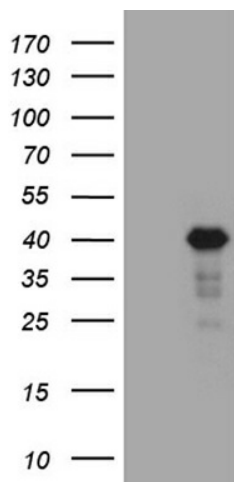
### LIMS2 Mouse Monoclonal Antibody [Clone ID: OTI5H8]

#### Product data:

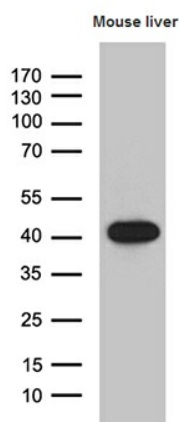
Product Type:	Primary Antibodies
Clone Name:	OTI5H8
Applications:	WB
Recommended Dilution:	WB 1:500~2000
Reactivity:	Human, Mouse, Rat
Host:	Mouse
Isotype:	IgG1
Clonality:	Monoclonal
Immunogen:	Human recombinant protein fragment corresponding to amino acids 1-363 of human LIMS2 (NP_060450) produced in E.coli.
Formulation:	PBS (pH 7.3) containing 1% BSA, 50% glycerol and 0.02% sodium azide.
Concentration:	1 mg/ml
Purification:	Purified from mouse ascites fluids or tissue culture supernatant by affinity chromatography (protein A/G)
Conjugation:	Unconjugated
Storage:	Store at -20°C as received.
Stability:	Stable for 12 months from date of receipt.
Predicted Protein Size:	41.3 kDa
Gene Name:	LIM zinc finger domain containing 2
Database Link:	<a href="#">NP_060450</a> <a href="#">Entrez Gene 225341 Mouse</a> <a href="#">Entrez Gene 361303 Rat</a> <a href="#">Entrez Gene 55679 Human</a> <a href="#">Q7Z4I7</a>
Synonyms:	LGMD2W; PINCH-2; PINCH2



[View online »](#)

**Product images:**


HEK293T cells were transfected with the pCMV6-ENTRY control (Cat# [PS100001], Left lane) or pCMV6-ENTRY LIMS2 (Cat# [RC213746], Right lane) cDNA for 48 hrs and lysed. Equivalent amounts of cell lysates (5 ug per lane) were separated by SDS-PAGE and immunoblotted with anti-LIMS2 (Cat# [TA811408])(1:2000). Positive lysates [LY413411] (100ug) and [LC413411] (20ug) can be purchased separately from OriGene.



Western blot analysis of extracts (35ug) from mouse liver tissue lysate by using anti-LIMS2 monoclonal antibody (1:500).