

Product datasheet for **TA811406M**

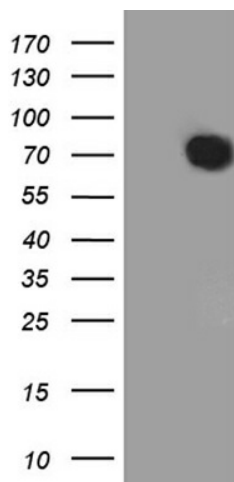
Pea3 (ETV4) Mouse Monoclonal Antibody [Clone ID: OTI1E11]

Product data:

Product Type:	Primary Antibodies
Clone Name:	OTI1E11
Applications:	WB
Recommended Dilution:	WB 1:2000
Reactivity:	Human, Mouse, Rat
Host:	Mouse
Isotype:	IgG1
Clonality:	Monoclonal
Immunogen:	Human recombinant protein fragment corresponding to amino acids 1-276 of human ETV4 (NP_001073143) produced in E.coli.
Formulation:	PBS (pH 7.3) containing 1% BSA, 50% glycerol and 0.02% sodium azide.
Concentration:	1 mg/ml
Purification:	Purified from mouse ascites fluids or tissue culture supernatant by affinity chromatography (protein A/G)
Conjugation:	Unconjugated
Storage:	Store at -20°C as received.
Stability:	Stable for 12 months from date of receipt.
Predicted Protein Size:	53.8 kDa
Gene Name:	ETS variant 4
Database Link:	NP_001073143 Entrez Gene 18612 Mouse Entrez Gene 360635 Rat Entrez Gene 2118 Human P43268
Synonyms:	E1A-F; E1AF; PEA3; PEAS3
Protein Families:	Druggable Genome, Transcription Factors


[View online »](#)

Product images:



HEK293T cells were transfected with the pCMV6-ENTRY control (Left lane) or pCMV6-ENTRY ETV4 ([RC202010], Right lane) cDNA for 48 hrs and lysed. Equivalent amounts of cell lysates (5 ug per lane) were separated by SDS-PAGE and immunoblotted with anti-ETV4 (1:2000). Positive lysates [LY421534] (100ug) and [LC421534] (20ug) can be purchased separately from OriGene.