

## Product datasheet for **TA811400BM**

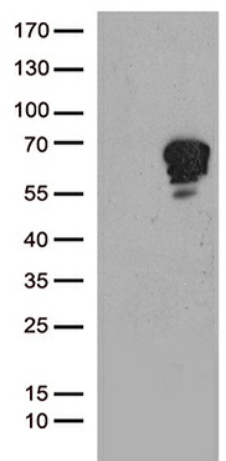
### **TSPYL1 Mouse Monoclonal Antibody (HRP conjugated) [Clone ID: OTI6C6]**

#### **Product data:**

Product Type:	Primary Antibodies
Clone Name:	OTI6C6
Applications:	WB
Recommended Dilution:	WB 1:500
Reactivity:	Human
Host:	Mouse
Isotype:	IgG2a
Clonality:	Monoclonal
Immunogen:	Human recombinant protein fragment corresponding to amino acids 1-272 of human TSPYL1 (NP_003300) produced in E.coli.
Formulation:	PBS (pH 7.3) containing 1% BSA, 50% glycerol.
Concentration:	0.5 mg/ml
Purification:	Purified from mouse ascites fluids or tissue culture supernatant by affinity chromatography (protein A/G)
Conjugation:	HRP
Storage:	Store at -20°C as received.
Stability:	Stable for 12 months from date of receipt.
Predicted Protein Size:	49 kDa
Gene Name:	TSPY-like 1
Database Link:	<a href="#">NP_003300</a> <a href="#">Entrez Gene 7259 Human</a> <a href="#">Q9H0U9</a>
Background:	The protein encoded by this gene is found in the nucleolus and is similar to that of a family of genes on the Y-chromosome. This gene is intronless. Defects in this gene are a cause of sudden infant death with dysgenesis of the testes syndrome (SIDDT). [provided by RefSeq, Dec 2009]
Synonyms:	TSPYL



[View online »](#)

**Product images:**

HEK293T cells were transfected with the pCMV6-ENTRY control (Cat# [PS100001], Left lane) or pCMV6-ENTRY TSPYL1 (Cat# [RC208456], Right lane) cDNA for 48 hrs and lysed. Equivalent amounts of cell lysates (5 ug per lane) were separated by SDS-PAGE and immunoblotted with anti-TSPYL1 (Cat# [TA811400]). Positive lysates [LY418771] (100ug) and [LC418771] (20ug) can be purchased separately from OriGene.