

Product datasheet for **TA811392S**

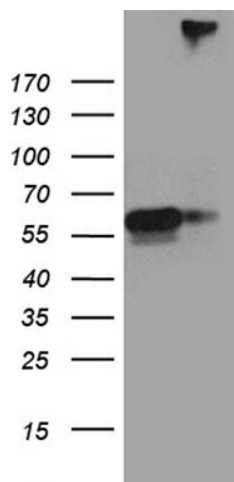
SEMA3G Mouse Monoclonal Antibody [Clone ID: OTI8E10]

Product data:

Product Type:	Primary Antibodies
Clone Name:	OTI8E10
Applications:	WB
Recommended Dilution:	WB 1:2000
Reactivity:	Human, Mouse, Rat
Host:	Mouse
Isotype:	IgG1
Clonality:	Monoclonal
Immunogen:	Human recombinant protein fragment corresponding to amino acids 569-782 of human SEMA3G (NP_064548) produced in E.coli.
Formulation:	PBS (pH 7.3) containing 1% BSA, 50% glycerol and 0.02% sodium azide.
Concentration:	1 mg/ml
Purification:	Purified from mouse ascites fluids or tissue culture supernatant by affinity chromatography (protein A/G)
Conjugation:	Unconjugated
Storage:	Store at -20°C as received.
Stability:	Stable for 12 months from date of receipt.
Predicted Protein Size:	86.5 kDa
Gene Name:	semaphorin 3G
Database Link:	NP_064548 Entrez Gene 218877 Mouse Entrez Gene 290562 Rat Entrez Gene 56920 Human Q9NS98
Synonyms:	sem2
Protein Families:	Druggable Genome, Secreted Protein
Protein Pathways:	Axon guidance



[View online »](#)

Product images:

HEK293T cells were transfected with the pCMV6-ENTRY control (Left lane) or pCMV6-ENTRY SEMA3G ([RC222035], Right lane) cDNA for 48 hrs and lysed. Equivalent amounts of cell lysates (5 ug per lane) were separated by SDS-PAGE and immunoblotted with anti-SEMA3G (1:2000). Positive lysates [LY412627] (100ug) and [LC412627] (20ug) can be purchased separately from OriGene.