

## Product datasheet for **TA811373BM**

### **TAF1 48 (TAF1A) Mouse Monoclonal Antibody (HRP conjugated) [Clone ID: OTI8C10]**

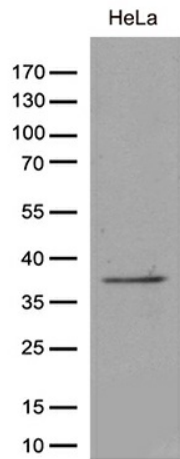
#### **Product data:**

<b>Product Type:</b>	Primary Antibodies
<b>Clone Name:</b>	OTI8C10
<b>Applications:</b>	WB
<b>Recommended Dilution:</b>	WB 1:500
<b>Reactivity:</b>	Human
<b>Host:</b>	Mouse
<b>Isotype:</b>	IgG1
<b>Clonality:</b>	Monoclonal
<b>Immunogen:</b>	Full length human recombinant protein of human TAF1A (NP_647603) produced in E.coli.
<b>Formulation:</b>	PBS (pH 7.3) containing 1% BSA, 50% glycerol.
<b>Concentration:</b>	0.5 mg/ml
<b>Purification:</b>	Purified from mouse ascites fluids or tissue culture supernatant by affinity chromatography (protein A/G)
<b>Conjugation:</b>	HRP
<b>Storage:</b>	Store at -20°C as received.
<b>Stability:</b>	Stable for 12 months from date of receipt.
<b>Predicted Protein Size:</b>	39.4 kDa
<b>Gene Name:</b>	TATA-box binding protein associated factor, RNA polymerase I subunit A
<b>Database Link:</b>	<a href="#">NP_647603</a> <a href="#">Entrez Gene 9015 Human</a> <a href="#">Q15573</a>
<b>Background:</b>	This gene encodes a subunit of the RNA polymerase I complex, Selectivity Factor I (SLI). The encoded protein is a TATA box-binding protein-associated factor that plays a role in the assembly of the RNA polymerase I preinitiation complex. Alternate splicing results in multiple transcript variants encoding multiple isoforms. [provided by RefSeq, Jan 2011]
<b>Synonyms:</b>	MGC:17061; RAFI48; SL1; TAFI48
<b>Protein Families:</b>	Transcription Factors



[View online »](#)

## Product images:



Western blot analysis of extracts (35ug) from cell lines and/or tissue lysates by using anti-TAF1A monoclonal antibody (1:500).