

Product datasheet for **TA811373AM**

TAF1 48 (TAF1A) Mouse Monoclonal Antibody (Biotin conjugated) [Clone ID: OTI8C10]

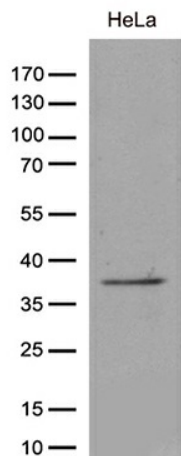
Product data:

Product Type:	Primary Antibodies
Clone Name:	OTI8C10
Applications:	WB
Recommended Dilution:	WB 1:500
Reactivity:	Human
Host:	Mouse
Isotype:	IgG1
Clonality:	Monoclonal
Immunogen:	Full length human recombinant protein of human TAF1A (NP_647603) produced in E.coli.
Formulation:	PBS (pH 7.3) containing 1% BSA, 50% glycerol and 0.02% sodium azide.
Concentration:	0.5 mg/ml
Purification:	Purified from mouse ascites fluids or tissue culture supernatant by affinity chromatography (protein A/G)
Conjugation:	Biotin
Storage:	Store at -20°C as received.
Stability:	Stable for 12 months from date of receipt.
Predicted Protein Size:	39.4 kDa
Gene Name:	TATA-box binding protein associated factor, RNA polymerase I subunit A
Database Link:	NP_647603 Entrez Gene 9015 Human Q15573
Background:	This gene encodes a subunit of the RNA polymerase I complex, Selectivity Factor I (SLI). The encoded protein is a TATA box-binding protein-associated factor that plays a role in the assembly of the RNA polymerase I preinitiation complex. Alternate splicing results in multiple transcript variants encoding multiple isoforms. [provided by RefSeq, Jan 2011]
Synonyms:	MGC:17061; RAFI48; SL1; TAFI48
Protein Families:	Transcription Factors



[View online »](#)

Product images:



Western blot analysis of extracts (35ug) from cell lines and/or tissue lysates by using anti-TAF1A monoclonal antibody (1:500).