

## Product datasheet for **TA811368**

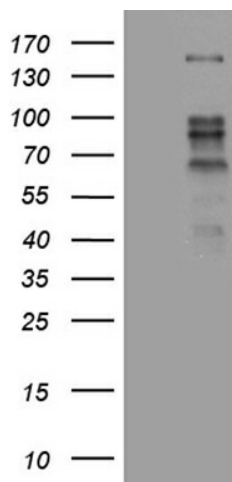
### ZBTB4 Mouse Monoclonal Antibody [Clone ID: OTI1F6]

#### Product data:

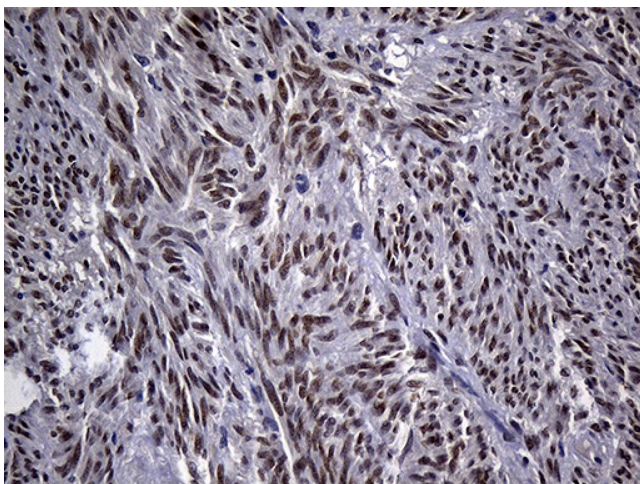
Product Type:	Primary Antibodies
Clone Name:	OTI1F6
Applications:	IHC, WB
Recommended Dilution:	WB 1:500, IHC 1:500
Reactivity:	Human, Mouse, Rat
Host:	Mouse
Isotype:	IgG1
Clonality:	Monoclonal
Immunogen:	Human recombinant protein fragment corresponding to amino acids 788-1013 of human ZBTB4 (NP_065950) produced in E.coli.
Formulation:	PBS (pH 7.3) containing 1% BSA, 50% glycerol and 0.02% sodium azide.
Concentration:	1 mg/ml
Purification:	Purified from mouse ascites fluids or tissue culture supernatant by affinity chromatography (protein A/G)
Conjugation:	Unconjugated
Storage:	Store at -20°C as received.
Stability:	Stable for 12 months from date of receipt.
Gene Name:	zinc finger and BTB domain containing 4
Database Link:	<a href="#">NP_065950</a> <a href="#">Entrez Gene 75580 Mouse</a> <a href="#">Entrez Gene 287441 Rat</a> <a href="#">Entrez Gene 57659 Human</a> <a href="#">Q9P1Z0</a>
Synonyms:	KAISO-L1; ZNF903



[View online »](#)

**Product images:**

HEK293T cells were transfected with the pCMV6-ENTRY control (Cat# [PS100001], Left lane) or pCMV6-ENTRY ZBTB4 (Cat# [RC208138], Right lane) cDNA for 48 hrs and lysed. Equivalent amounts of cell lysates (5 ug per lane) were separated by SDS-PAGE and immunoblotted with anti-ZBTB4 (Cat# TA811368)(1:500).



Immunohistochemical staining of paraffin-embedded Human gastric stromal tumor tissue using anti-ZBTB4 mouse monoclonal antibody. (Heat-induced epitope retrieval by 1mM EDTA in 10mM Tris buffer (pH8.5) at 120°C for 3min, TA811368) (1:500)