

Product datasheet for **TA811366S**

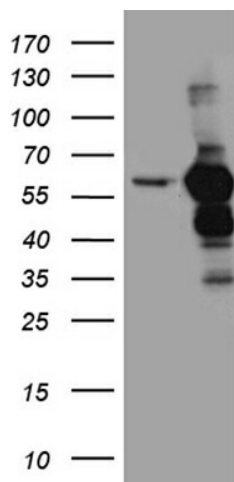
TXNRD1 Mouse Monoclonal Antibody [Clone ID: OTI7B2]

Product data:

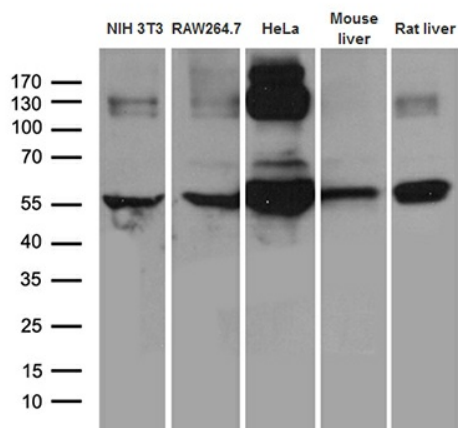
Product Type:	Primary Antibodies
Clone Name:	OTI7B2
Applications:	IHC, WB
Recommended Dilution:	WB 1:500~2000, IHC 1:2000
Reactivity:	Human, Rat, Mouse
Host:	Mouse
Isotype:	IgG1
Clonality:	Monoclonal
Immunogen:	Full length human recombinant protein of human TXNRD1 (NP_003321) produced in E.coli.
Formulation:	PBS (pH 7.3) containing 1% BSA, 50% glycerol and 0.02% sodium azide.
Concentration:	1 mg/ml
Purification:	Purified from mouse ascites fluids or tissue culture supernatant by affinity chromatography (protein A/G)
Conjugation:	Unconjugated
Storage:	Store at -20°C as received.
Stability:	Stable for 12 months from date of receipt.
Gene Name:	thioredoxin reductase 1
Database Link:	NP_003321 Entrez Gene 50493 Mouse Entrez Gene 58819 Rat Entrez Gene 7296 Human Q16881
Synonyms:	GRIM-12; TR; TR1; TRXR1; TXNR
Protein Families:	Druggable Genome
Protein Pathways:	Pyrimidine metabolism



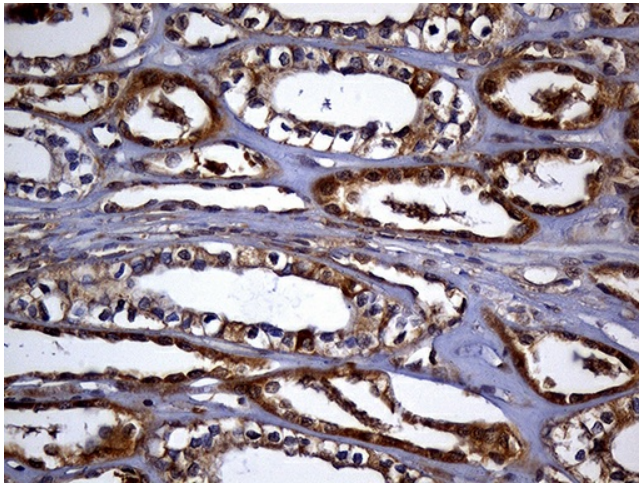
[View online »](#)

Product images:


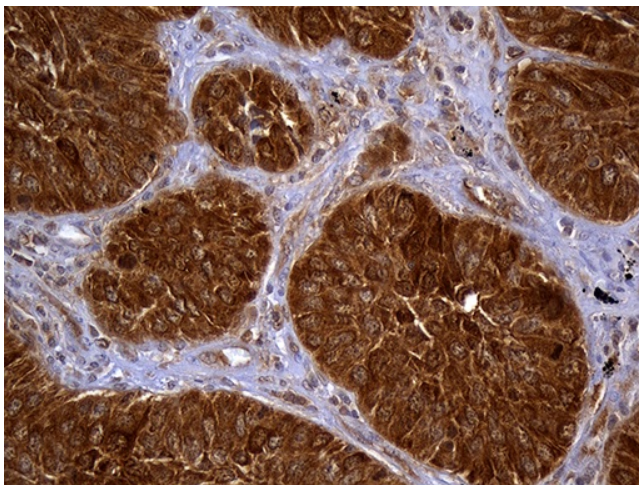
HEK293T cells were transfected with the pCMV6-ENTRY control (Cat# [PS100001], Left lane) or pCMV6-ENTRY TXNRD1 (Cat# [RC202040], Right lane) cDNA for 48 hrs and lysed. Equivalent amounts of cell lysates (5 ug per lane) were separated by SDS-PAGE and immunoblotted with anti-TXNRD1 (Cat# [TA811366])(1:2000).



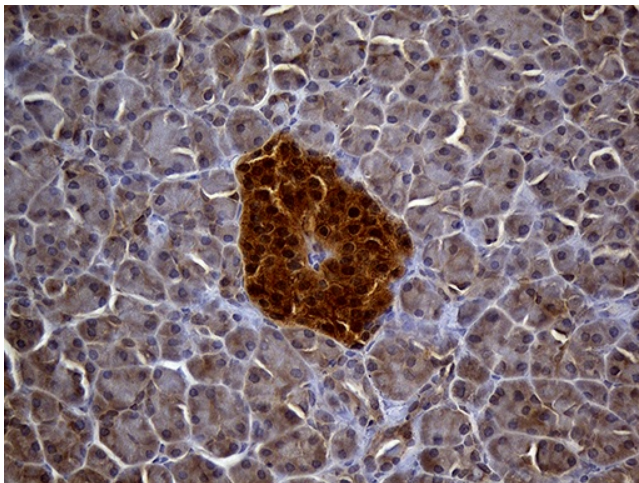
Western blot analysis of extracts (35ug) from 3 different cell lines and 2 different tissue lysates by using anti-TXNRD1 monoclonal antibody (1:500).



Immunohistochemical staining of paraffin-embedded Human Kidney tissue within the normal limits using anti-TXNRD1 mouse monoclonal antibody. (Heat-induced epitope retrieval by 1mM EDTA in 10mM Tris buffer (pH8.5) at 120°C for 3min, [TA811366]) (1:2000)



Immunohistochemical staining of paraffin-embedded Carcinoma of Human lung tissue using anti-TXNRD1 mouse monoclonal antibody. (Heat-induced epitope retrieval by 1mM EDTA in 10mM Tris buffer (pH8.5) at 120°C for 3min, [TA811366]) (1:2000)



Immunohistochemical staining of paraffin-embedded Human pancreas tissue within the normal limits using anti-TXNRD1 mouse monoclonal antibody. (Heat-induced epitope retrieval by 1mM EDTA in 10mM Tris buffer (pH8.5) at 120°C for 3min, [TA811366]) (1:2000)