

## Product datasheet for **TA811338S**

### **C16orf57 (USB1) Mouse Monoclonal Antibody [Clone ID: OTI4B1]**

#### **Product data:**

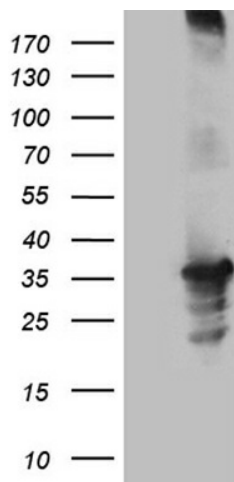
<b>Product Type:</b>	Primary Antibodies
<b>Clone Name:</b>	OTI4B1
<b>Applications:</b>	WB
<b>Recommended Dilution:</b>	WB 1:2000
<b>Reactivity:</b>	Human
<b>Host:</b>	Mouse
<b>Isotype:</b>	IgG2a
<b>Clonality:</b>	Monoclonal
<b>Immunogen:</b>	Full length human recombinant protein of human C16orf57 (NP_078874) produced in E.coli.
<b>Formulation:</b>	PBS (pH 7.3) containing 1% BSA, 50% glycerol and 0.02% sodium azide.
<b>Concentration:</b>	1 mg/ml
<b>Purification:</b>	Purified from mouse ascites fluids or tissue culture supernatant by affinity chromatography (protein A/G)
<b>Conjugation:</b>	Unconjugated
<b>Storage:</b>	Store at -20°C as received.
<b>Stability:</b>	Stable for 12 months from date of receipt.
<b>Predicted Protein Size:</b>	30.1 kDa
<b>Gene Name:</b>	U6 snRNA biogenesis phosphodiesterase 1
<b>Database Link:</b>	<a href="#">NP_078874</a> <a href="#">Entrez Gene 79650 Human</a> <a href="#">Q9BQ65</a>
<b>Background:</b>	This gene encodes a protein with several conserved domains, however, its exact function is not known. Mutations in this gene are associated with poikiloderma with neutropenia (PN), which shows phenotypic overlap with Rothmund-Thomson syndrome (RTS) caused by mutations in the RECQL4 gene. It is believed that this gene product interacts with RECQL4 protein via SMAD4 proteins, explaining the partial clinical overlap between PN and RTS. Alternatively spliced transcript variants encoding different isoforms have been noted for this gene. [provided by RefSeq, Mar 2011]



[View online »](#)

Synonyms: C16orf57; hUsb1; HVSL1; Mpn1; PN

### Product images:



HEK293T cells were transfected with the pCMV6-ENTRY control (Left lane) or pCMV6-ENTRY C16orf57 ([RC202591], Right lane) cDNA for 48 hrs and lysed. Equivalent amounts of cell lysates (5 ug per lane) were separated by SDS-PAGE and immunoblotted with anti-C16orf57 (1:2000). Positive lysates [LY411214] (100ug) and [LC411214] (20ug) can be purchased separately from OriGene.