

Product datasheet for **TA811337AM**

p107 (RBL1) Mouse Monoclonal Antibody (Biotin conjugated) [Clone ID: OTI4E1]

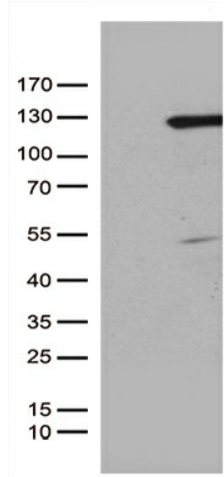
Product data:

Product Type:	Primary Antibodies
Clone Name:	OTI4E1
Applications:	WB
Recommended Dilution:	WB 1:500
Reactivity:	Human, Mouse, Rat
Host:	Mouse
Isotype:	IgG1
Clonality:	Monoclonal
Immunogen:	Human recombinant protein fragment corresponding to amino acids 739-1014 of human RBL1 (NP_899662) produced in E.coli.
Formulation:	PBS (pH 7.3) containing 1% BSA, 50% glycerol and 0.02% sodium azide.
Concentration:	0.5 mg/ml
Purification:	Purified from mouse ascites fluids or tissue culture supernatant by affinity chromatography (protein A/G)
Conjugation:	Biotin
Storage:	Store at -20°C as received.
Stability:	Stable for 12 months from date of receipt.
Predicted Protein Size:	114.5 kDa
Gene Name:	RB transcriptional corepressor like 1
Database Link:	NP_899662 Entrez Gene 19650 Mouse Entrez Gene 680111 Rat Entrez Gene 5933 Human P28749
Synonyms:	CP107; p107; PRB1
Protein Families:	Druggable Genome, Transcription Factors
Protein Pathways:	Cell cycle, TGF-beta signaling pathway

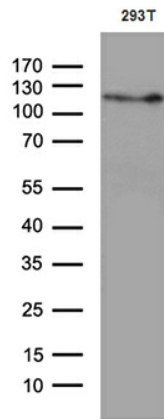


[View online »](#)

Product images:



HEK293T cells were transfected with the pCMV6-ENTRY control (Cat# [PS100001], Left lane) or pCMV6-ENTRY RBL1 (Cat# [RC207017], Right lane) cDNA for 48 hrs and lysed. Equivalent amounts of cell lysates (5 ug per lane) were separated by SDS-PAGE and immunoblotted with anti-RBL1 (Cat# [TA811337])(1:500). Positive lysates [LY403655] (100ug) and [LC403655] (20ug) can be purchased separately from OriGene.



Western blot analysis of extracts (35ug) from 293T cell line by using anti-RBL1 monoclonal antibody (1:500).