

## Product datasheet for **TA811336M**

### EVX1 Mouse Monoclonal Antibody [Clone ID: OTI1A9]

#### Product data:

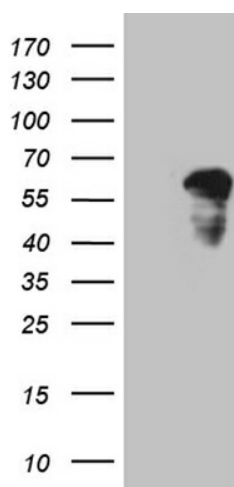
Product Type:	Primary Antibodies
Clone Name:	OTI1A9
Applications:	WB
Recommended Dilution:	WB 1:2000
Reactivity:	Human, Mouse, Rat
Host:	Mouse
Isotype:	IgG1
Clonality:	Monoclonal
Immunogen:	Human recombinant protein fragment corresponding to amino acids 1-244 of human EVX1 (NP_001980) produced in E.coli.
Formulation:	PBS (pH 7.3) containing 1% BSA, 50% glycerol and 0.02% sodium azide.
Concentration:	1 mg/ml
Purification:	Purified from mouse ascites fluids or tissue culture supernatant by affinity chromatography (protein A/G)
Conjugation:	Unconjugated
Storage:	Store at -20°C as received.
Stability:	Stable for 12 months from date of receipt.
Predicted Protein Size:	42.3 kDa
Gene Name:	even-skipped homeobox 1
Database Link:	<a href="#">NP_001980</a> <a href="#">Entrez Gene 14028 Mouse</a> <a href="#">Entrez Gene 500130 Rat</a> <a href="#">Entrez Gene 103690342 Rat</a> <a href="#">Entrez Gene 2128 Human</a> <a href="#">P49640</a>
Background:	This gene encodes a member of the even-skipped homeobox family characterized by the presence of a homeodomain closely related to the Drosophila even-skipped (eve) segmentation gene of the pair-rule class. The encoded protein may play an important role as a transcriptional repressor during embryogenesis. [provided by RefSeq, Jul 2008]


[View online »](#)

**Synonyms:** EVX-1

**Protein Families:** ES Cell Differentiation/IPS

**Product images:**



HEK293T cells were transfected with the pCMV6-ENTRY control (Left lane) or pCMV6-ENTRY EVX1 ([RC214211], Right lane) cDNA for 48 hrs and lysed. Equivalent amounts of cell lysates (5 ug per lane) were separated by SDS-PAGE and immunoblotted with anti-EVX1 (1:2000). Positive lysates [LY400729] (100ug) and [LC400729] (20ug) can be purchased separately from OriGene.