

Product datasheet for **TA811328BM**

C16orf57 (USB1) Mouse Monoclonal Antibody (HRP conjugated) [Clone ID: OTI1B1]

Product data:

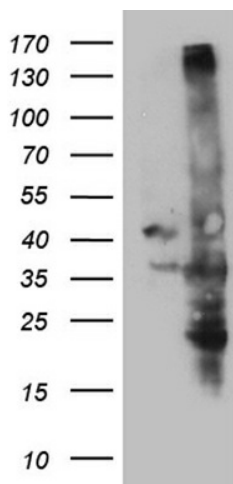
Product Type:	Primary Antibodies
Clone Name:	OTI1B1
Applications:	WB
Recommended Dilution:	WB 1:500~2000
Reactivity:	Human
Host:	Mouse
Isotype:	IgG2b
Clonality:	Monoclonal
Immunogen:	Full length human recombinant protein of human C16orf57 (NP_078874) produced in E.coli.
Formulation:	PBS (pH 7.3) containing 1% BSA, 50% glycerol.
Concentration:	0.5 mg/ml
Purification:	Purified from mouse ascites fluids or tissue culture supernatant by affinity chromatography (protein A/G)
Conjugation:	HRP
Storage:	Store at -20°C as received.
Stability:	Stable for 12 months from date of receipt.
Predicted Protein Size:	30.1 kDa
Gene Name:	U6 snRNA biogenesis phosphodiesterase 1
Database Link:	NP_078874 Entrez Gene 79650 Human Q9BQ65
Background:	This gene encodes a protein with several conserved domains, however, its exact function is not known. Mutations in this gene are associated with poikiloderma with neutropenia (PN), which shows phenotypic overlap with Rothmund-Thomson syndrome (RTS) caused by mutations in the RECQL4 gene. It is believed that this gene product interacts with RECQL4 protein via SMAD4 proteins, explaining the partial clinical overlap between PN and RTS. Alternatively spliced transcript variants encoding different isoforms have been noted for this gene. [provided by RefSeq, Mar 2011]



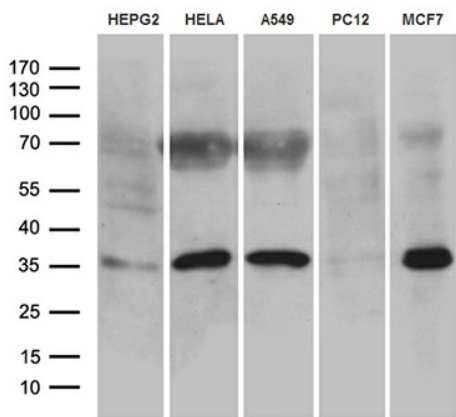
[View online »](#)

Synonyms: C16orf57; hUsb1; HVSL1; Mpn1; PN

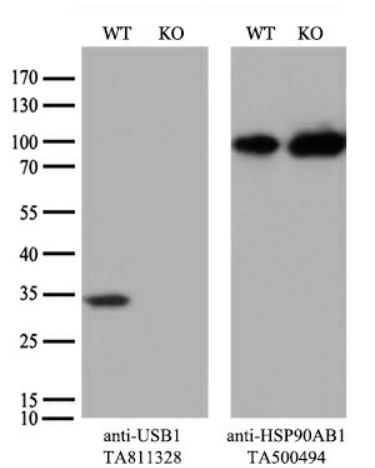
Product images:



HEK293T cells were transfected with the pCMV6-ENTRY control (Cat# [PS100001], Left lane) or pCMV6-ENTRY C16orf57 (Cat# [RC202591], Right lane) cDNA for 48 hrs and lysed. Equivalent amounts of cell lysates (5 ug per lane) were separated by SDS-PAGE and immunoblotted with anti-C16orf57 (Cat# [TA811328])(1:2000). Positive lysates [LY411214] (100ug) and [LC411214] (20ug) can be purchased separately from OriGene.



Western blot analysis of extracts (35ug) from 5 different cell lines by using anti-C16orf57 monoclonal antibody (1:500).



Equivalent amounts of cell lysates (10 ug per lane) of wild-type HeLa cells (WT, Cat# LC810HELA) and USB1-Knockout HeLa cells (KO, Cat# [LC832371]) were separated by SDS-PAGE and immunoblotted with anti-USB1 monoclonal antibody [TA811328] (1:500). Then the blotted membrane was stripped and reprobed with anti-HSP90 antibody as a loading control.