

## Product datasheet for **TA811323**

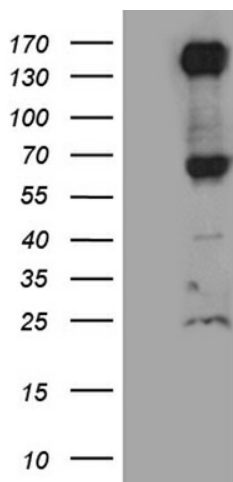
### ROBO4 Mouse Monoclonal Antibody [Clone ID: OTI4E2]

#### Product data:

Product Type:	Primary Antibodies
Clone Name:	OTI4E2
Applications:	WB
Recommended Dilution:	WB 1:2000
Reactivity:	Human
Host:	Mouse
Isotype:	IgG1
Clonality:	Monoclonal
Immunogen:	Human recombinant protein fragment corresponding to amino acids 32-331 of human ROBO4 (NP_061928) produced in E.coli.
Formulation:	PBS (pH 7.3) containing 1% BSA, 50% glycerol and 0.02% sodium azide.
Concentration:	1 mg/ml
Purification:	Purified from mouse ascites fluids or tissue culture supernatant by affinity chromatography (protein A/G)
Conjugation:	Unconjugated
Storage:	Store at -20°C as received.
Stability:	Stable for 12 months from date of receipt.
Predicted Protein Size:	107.3 kDa
Gene Name:	roundabout guidance receptor 4
Database Link:	<a href="#">NP_061928</a> <a href="#">Entrez Gene 54538 Human</a> <a href="#">Q8WZ75</a>
Synonyms:	ECSM4; MRB
Protein Families:	Druggable Genome



[View online »](#)

**Product images:**

HEK293T cells were transfected with the pCMV6-ENTRY control (Cat# [PS100001], Left lane) or pCMV6-ENTRY ROBO4 (Cat# [RC213730], Right lane) cDNA for 48 hrs and lysed. Equivalent amounts of cell lysates (5 ug per lane) were separated by SDS-PAGE and immunoblotted with anti-ROBO4 (Cat# TA811323)(1:2000). Positive lysates [LY412794] (100ug) and [LC412794] (20ug) can be purchased separately from OriGene.