

Product datasheet for **TA811319BM**

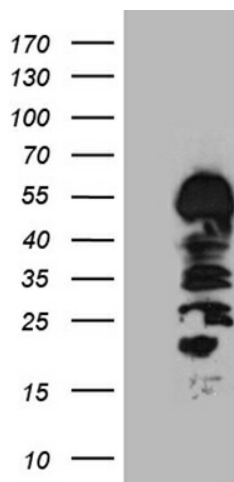
HS1BP3 Mouse Monoclonal Antibody (HRP conjugated) [Clone ID: OTI6C6]

Product data:

Product Type:	Primary Antibodies
Clone Name:	OTI6C6
Applications:	WB
Recommended Dilution:	WB 1:500
Reactivity:	Human
Host:	Mouse
Isotype:	IgG1
Clonality:	Monoclonal
Immunogen:	Human recombinant protein fragment corresponding to amino acids 145-392 of human HS1BP3 (NP_071905) produced in E.coli.
Formulation:	PBS (pH 7.3) containing 1% BSA, 50% glycerol.
Concentration:	0.5 mg/ml
Purification:	Purified from mouse ascites fluids or tissue culture supernatant by affinity chromatography (protein A/G)
Conjugation:	HRP
Storage:	Store at -20°C as received.
Stability:	Stable for 12 months from date of receipt.
Predicted Protein Size:	42.6 kDa
Gene Name:	HCLS1 binding protein 3
Database Link:	NP_071905 Entrez Gene 64342 Human Q53T59
Synonyms:	ETM2; HS1-BP3



[View online »](#)

Product images:

HEK293T cells were transfected with the pCMV6-ENTRY control (Left lane) or pCMV6-ENTRY HS1BP3 ([RC208668], Right lane) cDNA for 48 hrs and lysed. Equivalent amounts of cell lysates (5 ug per lane) were separated by SDS-PAGE and immunoblotted with anti-HS1BP3 (1:500). Positive lysates [LY411675] (100ug) and [LC411675] (20ug) can be purchased separately from OriGene.